

209/910 Pittwater Road Dee Why, NSW



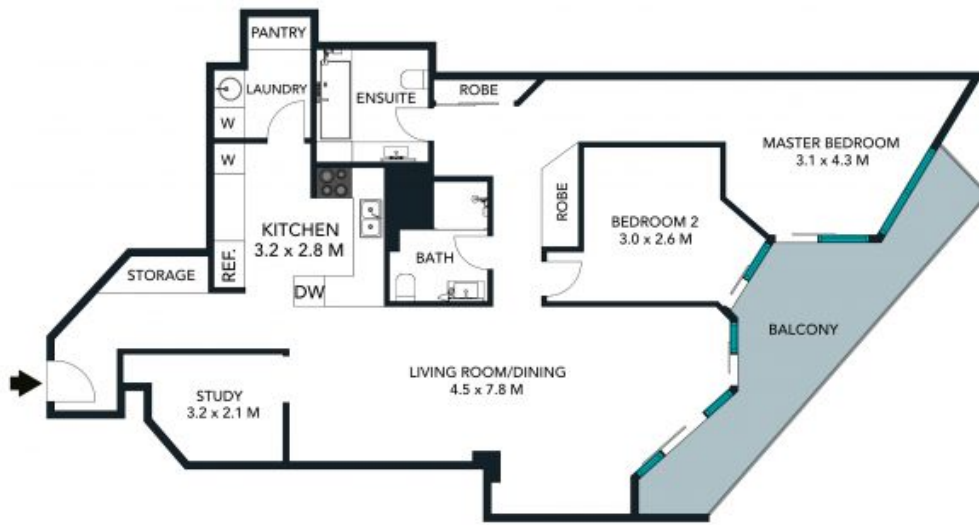
Superb lifestyle close to the beach, quietly set at the rear of the block

Price: SOLD \$940,000
Council Rates: \$351.00 p/q
Water Rates: \$179.00 p/q
Strata Rates: \$1,634.00 p/q



Anthony Parker

0409 747 152



UNDER
BUILDING
SECURE
PARKING
5.4 X 2.4 M

(NOT IN POSITION)

The floor plan is not to scale, measurements are indicative and in metres. Colour elements are not to position. Plans should not be relied on. Interested parties should make and rely on their own enquiries. All other information provided has been collected from reliable sources but cannot be guaranteed for accuracy.

209/910 Pittwater Road, Dee Why





The floor plan is not to scale, measurements are indicative and in metres. All features included in this 3D plan are for inspiration purposes only. This is not an exact replica of the property or the position of exterior elements. Plans should not be relied on. Interested parties should make and rely on their own enquiries.

209/910 Pittwater Road, Dee Why



STONE