






11/6 Fairway Close Manly Vale, NSW 2  1  1 

Treetop tranquility and vibrant beachside living

Sunshine and gentle cross breezes flow through this apartment that capitalises on its unique parkland setting and maximises every aspect of its outdoor and indoor living spaces. Comprehensively refurbished and set on the top floor of a boutique complex, this residence enjoys treetop views with the very best of beachside living and urban centrality. Perfect for first home buyers and investors alike.

Price: Price Guide \$780,000



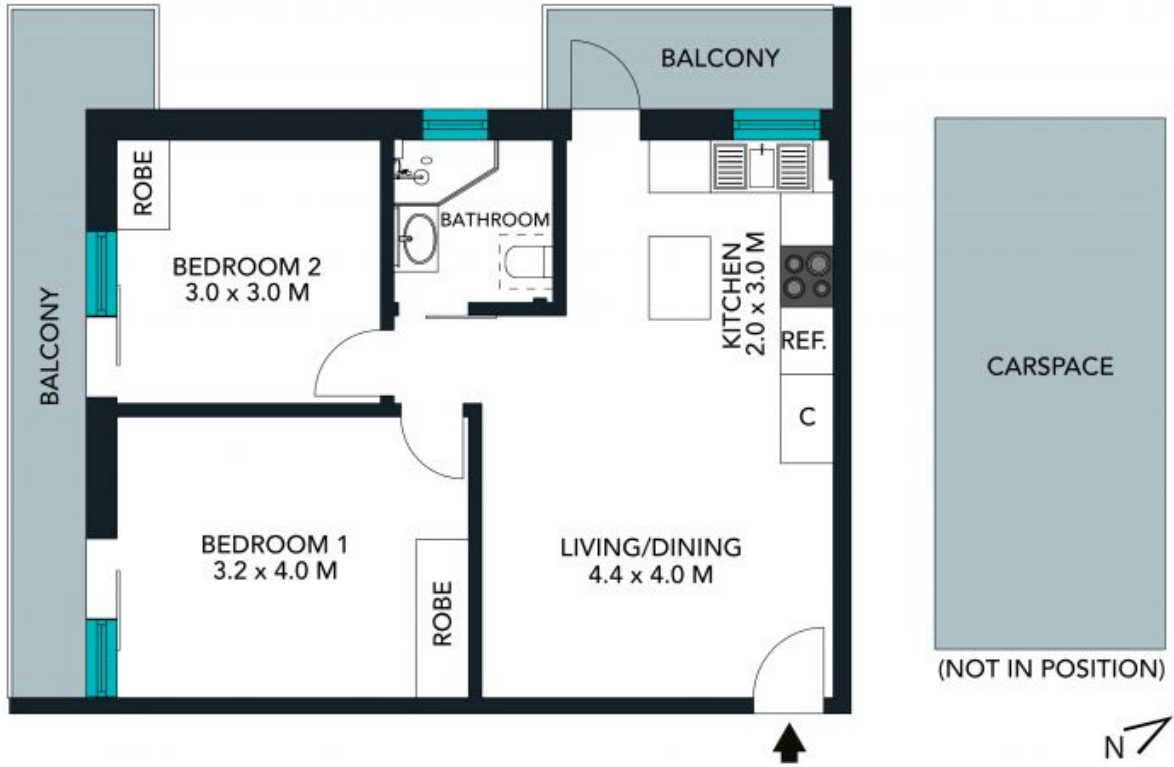
Chris Elliott

0410 416 066



Louise Ashdown

0414 764 108



The floor plan is not to scale, measurements are indicative and in metres. Colour elements are not in position. Plans should not be relied on. Interested parties should make and rely on their own enquiries. All other information provided has been collected from reliable sources but cannot be guaranteed for accuracy.

11/6 Fairway Close, Manly Vale





The floor plan is not to scale, measurements are indicative and in metres. All features included in this 3D plan are for inspiration purposes only. This is not an exact replica of the property or the position of exterior elements. Plans should not be relied on. Interested parties should make and rely on their own enquiries.

11/6 Fairway Close, Manly Vale

