



14 Central Avenue Mosman, NSW

3

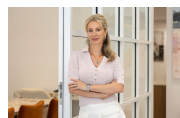
2

### Stunning family home

Traditional features and stylish, modern additions combine in this picturesque and spacious single level residence to create a warm and welcoming private sanctuary brimming with space, character and light. In a coveted location above Quakers Hat Bay, the home graces a level flow-through parcel of land with dual street access and offers complete privacy and is exquisitely appointed for the premium lifestyle of seamless indoor and outdoor living at its finest.

Price:

Contact Marize Bellomo



**Marize Bellomo**

0414 972 203



**Bruce N. Huang**

0468 694 060

à,fé²•æ-é»,,



GROUND FLOOR



ABOVE BEDROOM2

The floor plan is not to scale, measurements are indicative and in metres. All features included in this 3D plan are for inspiration purposes only. This is not an exact replica of the property or the position of exterior elements. Plans should not be relied on. Interested parties should make and rely on their own enquiries.

14 Central Avenue, Mosman



STONE



The site plan and floor plan are not to scale, measurements are indicative and in meters. Shades and lines are placed for illustration purposes. Plans should not be relied on. Interested parties should make and rely on their own enquiries. All other information provided has been collected from reliable sources but cannot be guaranteed for accuracy.

14 Central Avenue, Mosman

