



24/67 Bradleys Head Road Mosman, NSW

2 1 1

LEASED - HOLDING DEPOSIT TAKEN

Price: \$850 per week

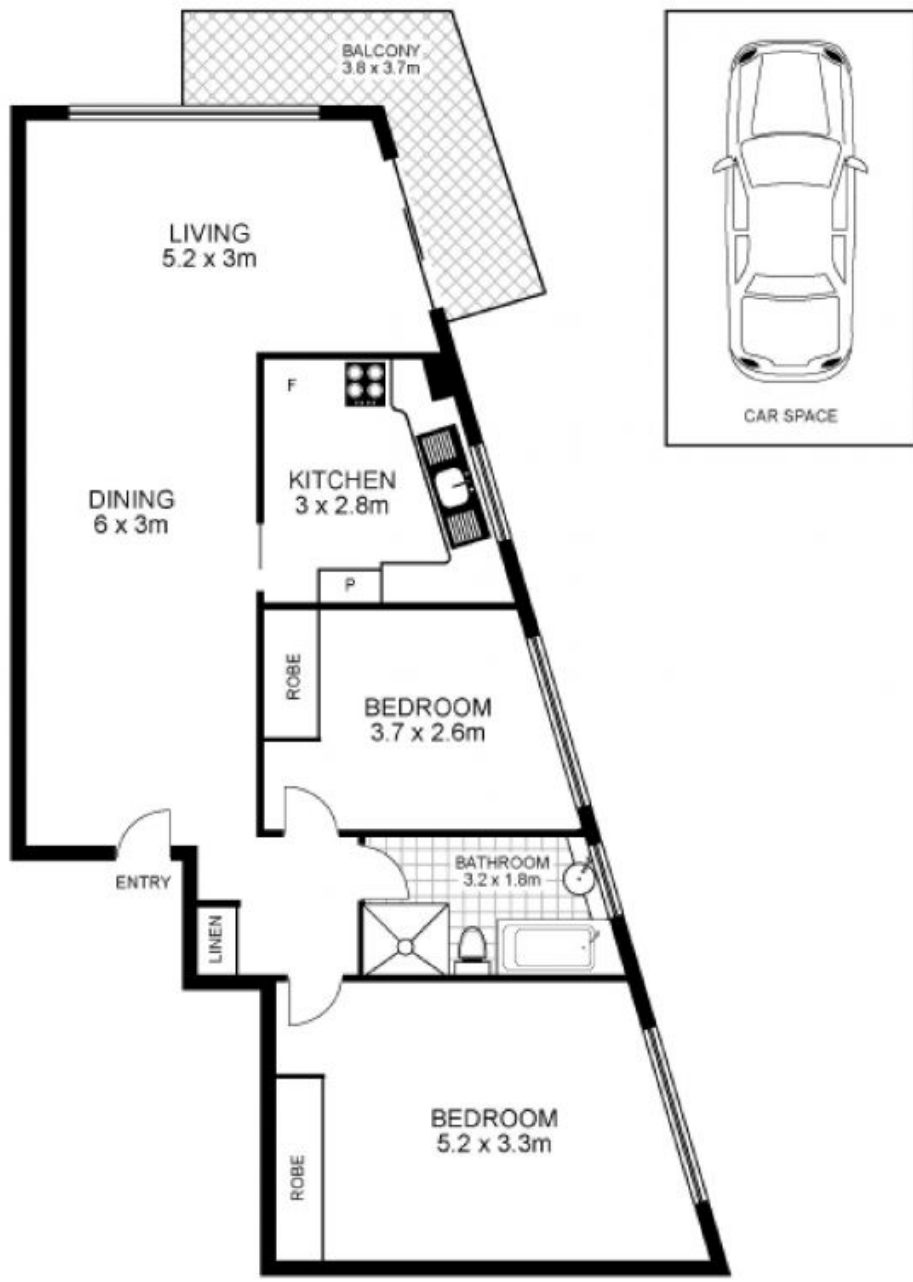
Available Date: 29/02/2020

- Contemporary light filled interiors exude a chic and sophisticated ambiance
- Wraparound 270 degree balcony gazes over Sydney Harbour and beyond, right around to North Head
- Spacious lounge, dining and kitchen all enjoy uninterrupted Sydney Harbour views
- Open plan gas kitchen with ample storage, integrated appliances
- Two bedrooms with built-in robes, ceiling fans and district views
- Modern bathroom, frameless glass shower, space for washer/dryer
- Impeccably maintained development with level lift access and security intercom
- Single undercover car space ideally positioned located just footsteps from complex entrance



Marize Bellomo

0414 972 203



INTERNAL DIMENSIONS (INC. BALCONY) : 89.3 SQM
 CAR SPACE: 11.5 SQM
 TOTAL : 100.8 SQM



24/67 Bradleys Head Road, MOSMAN

Disclaimer: This floor plan is intended as a guide only. Layout dimensions are approximate only. No representations or warranties of any nature whatsoever are given or intended. Any individuals using this information should always rely on their own enquiries.