

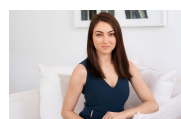


1/202 Beecroft Road Cheltenham, NSW      3 1 2

### Charming family home, close to transport and sought after schools

Ideally placed a leisurely stroll from Cheltenham Station and some of the area's finest schools, this solid brick, single storey home is brimming with character and ready for immediate enjoyment. It occupies a sundrenched corner position featuring leafy level gardens privately screened by trees and offers a delightful haven of light and charm with immense young family appeal.

**Price:** DEPOSIT TAKEN  
**Available Date:** 26/03/2020



**Sarah Hastings**

02 8893 2218



The floor plan is not to scale; measurements are indicative and in metres. All features included in this 3D plan are for inspiration purposes only. This is not an exact replica of the property or the position of exterior elements. Plans should not be relied on. Interested parties should make and rely on their own enquiries.

1/202 Beecroft Road, Cheltenham  
stonerealestate.com.au

Produced by DIAKRIT



SITE PLAN



The site plan and floor plan are not to scale; measurements are indicative and in metres. Bushes and trees are placed for illustration purposes. Plans should not be relied on. Interested parties should make and rely on their own enquiries.

1/202 Beecroft Road, Cheltenham  
 stonerealestate.com.au

Produced by DIAKRIT