

3/49-53 Ben Boyd Road Neutral Bay, NSW



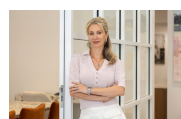
Executive living at its finest

Within a boutique development known as 'Stanford Mews', this is a quality development and only a short stroll to Hayes Street Wharf. This beautifully presented town home is exceptionally placed for a premium lifestyle on offer. The home offers stylish low maintenance interiors complemented by a leafy alfresco retreat, includes a rare four-car lock up garage and resides within the catchment for Neutral Bay Public School, which is only minutes away.

- Spacious living-dining flows seamlessly onto a private north facing entertaining courtyard
- Bright modern kitchen includes induction cooktop and Miele dishwasher
- Internal laundry adjacent to the kitchen
- Three bedrooms upstairs all offering built-in robes plus ensuite to the master suite
- Incorporated home office, full main bathroom and guest powder room on entrance level
- Air conditioning, floorboards and plantation shutters throughout
- Automatic lock-up garage with added storage provides parking for four vehicles

Price:

Contact Marize Bellomo



Marize Bellomo

0414 972 203



Bruce N. Huang

0468 694 060

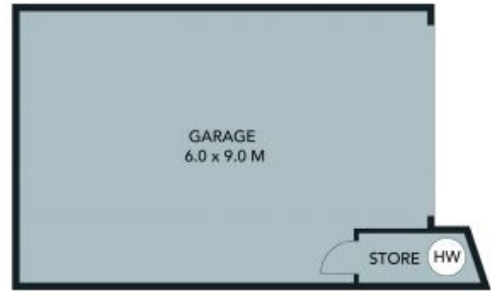
à,fé²•æ-é»,,



UPPER LEVEL



GROUND LEVEL



LOWER LEVEL

Internal Area Approx 178 sqm
 External Area Approx 32 sqm
 Total Area Approx 210 sqm

The floor plan is not to scale, measurements are indicative and in metres. Exterior elements are not to position. Plans should not be relied on. Interested parties should make and rely on their own enquiries. All other information provided has been collected from reliable sources but cannot be guaranteed for accuracy.



3/49 Ben Boyd Road, Neutral Bay





Internal Area Approx 178 sqm
 External Area Approx 32 sqm
 Total Area Approx 210 sqm

The floor plan is not to scale, measurements are indicative and in metres. All features included in this 3D plan are for inspiration purposes only. This is not an exact replica of the property or the position of exterior elements. Plans should not be relied on. Interested parties should make and rely on their own enquiries.



3/49 Ben Boyd Road, Neutral Bay

