



22B/2 Brady Street Mosman, NSW

3

2

2

Ultimate luxury, space and views in exclusive 'Bridlewood Gardens'

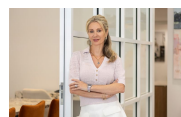
This exclusive residence offers uninterrupted 180 degree views, from almost every room. Award winning architecture, 'Mirvac' design, offering unrestricted apartment living. Immersed in picturesque leafy surrounds and enjoying an incredibly generous outdoor entertaining balcony which surrounds the apartment, this floorplan is arguably one of the finest.

Price:

Marize Bellomo - SOLD \$3,140,000

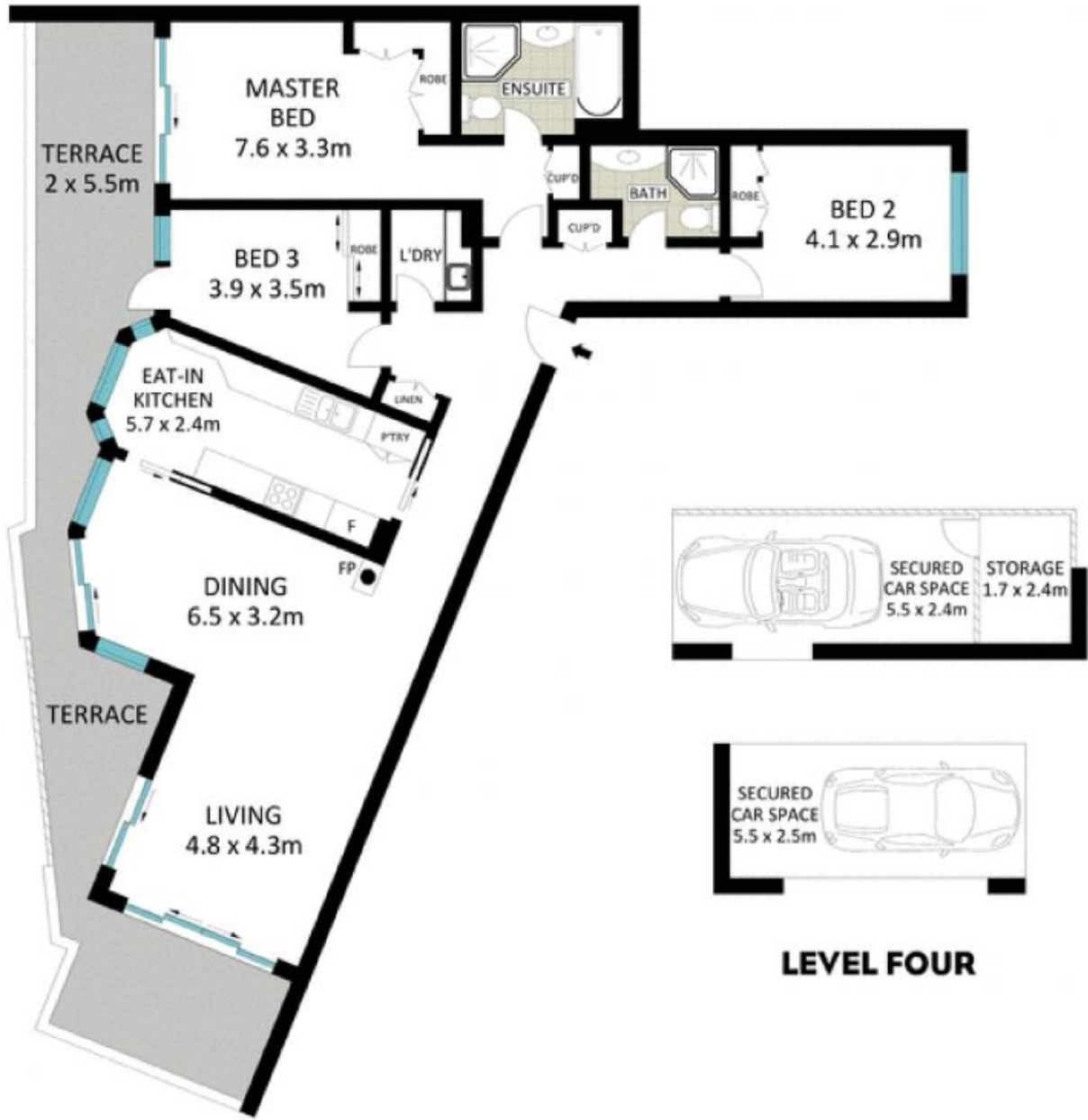


Mark Jones



Marize Bellomo

0414 972 203



LEVEL FOUR

0 1 2 3 4 5

Scale in meters. Indicative only. Dimension are approximate. All information contained herein is gathered from resources we believed to be reliable. However we cannot guarantee its accuracy and interested persons should rely on their own enquiries

