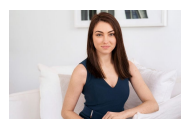


1.309/18 Hannah Street Beecroft, NSW 1 1 1

**As new luxury unit with unique floor-plan - Inspection by Appointment - Contact Agent to book in a time to view**

Showcasing all the essentials of the ultimate apartment lifestyle, this brand-new designer residence is set within the 'Beecroft Place' development. It combines light filled interiors, luxury finishes and an easycare layout to deliver an excellent low-maintenance home.

**Price:** DEPOSIT TAKEN  
**Available Date:** 15/04/2020



**Sarah Hastings**

02 8893 2218



The floor plan is not to scale. Measurements are indicative and in metres.



1.309/18 Hannah Street, Beecroft  
stonerealestate.com.au

Produced by DIAKRIT



The interior style and design of this floor plan is designed for inspiration purposes to show the living spaces. It is not an exact replica of the furniture and fittings in the home.

1.309/18 Hannah Street, Beecroft  
stonerealestate.com.au

Produced by DIAKRIT