



18 George Street Manly, NSW 3 2

Contact Tim Mumford on 0421 942 693 to arrange a private appointment

Retaining its vintage Federation pedigree throughout a recent designer transformation, this enchanting residence offers a rare sense of sanctuary within a stone's throw of Manly's buzzing hub. Designed for modern family living with bright open interiors flowing to private alfresco entertaining areas and level lawn, its tranquil setting is a short stroll to beaches and the wharf.

Price:

Contact Agent



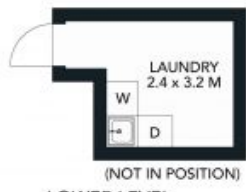
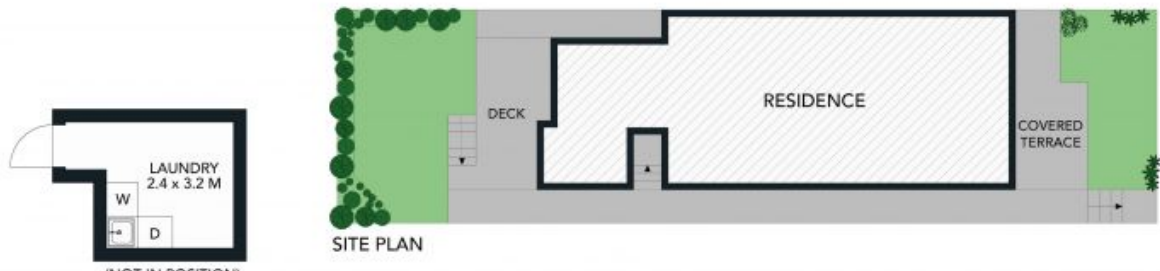
Tim Mumford

0421 942 693



Vicki Lamb

0452 431 344



The site plan and floor plan are not to scale, measurements are indicative and in metres. Batches and trees are placed for illustration purposes. Plans should not be relied on. Interested parties should make and rely on their own enquiries. All other information provided has been collected from reliable sources but cannot be guaranteed for accuracy.

18 George Street, Manly





GROUND LEVEL

LOWER LEVEL

The floor plan is not to scale, measurements are indicative and in metres. All features included in this 3D plan are for inspiration purposes only. This is not an exact replica of the property or the position of exterior elements. Plans should not be relied on. Interested parties should make and rely on their own enquiries.



18 George Street, Manly

