



64 Woodlands Road East Lindfield, NSW

5 

3 

3 

Exceptional lifestyle choice, ideal family setting

Beautifully presented and flooded with light in an elevated position on the high side of the street, this substantial family residence offers an abundance of space, with multiple stylish living areas, ample accommodation and seamless indoor/outdoor flow to a superb north-to-rear alfresco setting. Positioned on a sunny 1069sqm parcel with an (approx) 20 metre wide frontage, it is footsteps to local shops, parks, Lindfield East Public School and buses to the City and rail.

Price:

Contact Agent



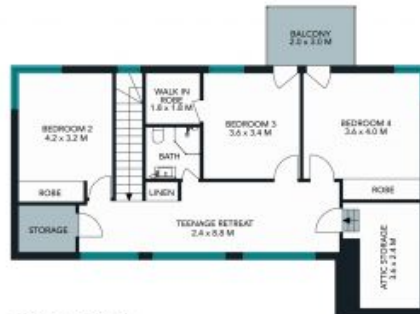
Steven Kourdis

0402 555 675



Donna Fischer

0424 163 144



The site plan and floor plan are not to scale, measurements are indicative and in meters. Boxes and lines are placed for illustration purposes. Plans should not be relied on. Interested parties should make and rely on their own enquiries. All other information provided has been collected from reliable sources but cannot be guaranteed for accuracy.

64 Woodlands Road, East Lindfield

STONE



GROUND FLOOR



FIRST FLOOR



The floor plan is not to scale, measurements are indicative and in metric. All features included in this 3D plan are for inspiration purposes only. This is not an exact replica of the property or the position of exterior elements. Plans should not be relied on. Interested parties should make and rely on their own enquiries.

64 Woodlands Road, East Lindfield

