



15 Brantwood Street Sans Souci, NSW

5

3

2

### Wide-fronted cottage full of charm and character

In a sundrenched position on the Sans Souci peninsula, this dual level residence with separate storybook cottage presents as a versatile family retreat rich in character and lifestyle allure. From the warm appeal of its divine interiors to the wraparound established gardens and in-ground pool, the home exudes both classic elegance and understated modern beauty in a vibrant setting. The property is ideally placed a short stroll from waterfront parklands and the beach, and with easy access to public transport, local shops, cafes and quality schools.

Price:

SOLD RAY FADEL | \$1,600,000



**Ray Fadel**

0413 177 739

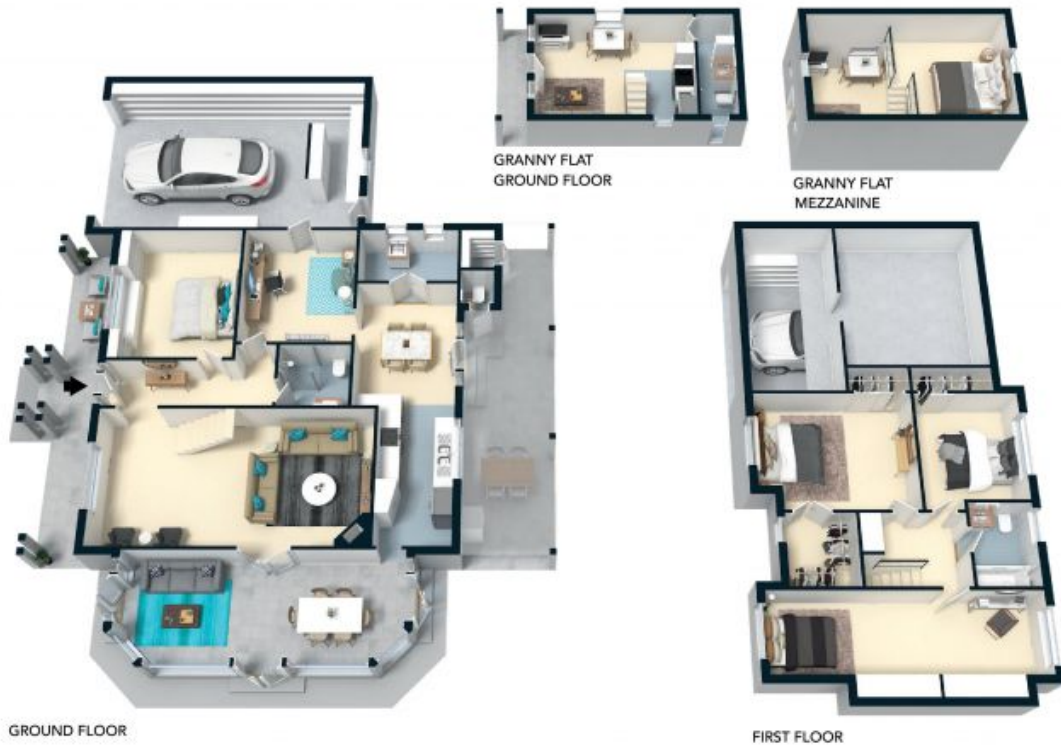


The site plan and floor plan are not to scale, measurements are indicative and in metres. Shades and lines are placed for illustration purposes. Plans should not be relied on. Interested parties should make and rely on their own enquiries. All other information provided has been collected from reliable sources but cannot be guaranteed for accuracy.

15 Brantwood Street, Sans Souci



**STONE**



GROUND FLOOR

GRANNY FLAT  
GROUND FLOOR

GRANNY FLAT  
MEZZANINE

FIRST FLOOR



The floor plan is not to scale, measurements are indicative and in metres. All features included in this 3D plan are for inspiration purposes only. This is not an exact replica of the property or the position of exterior elements. Plans should not be relied on. Interested parties should make and rely on their own enquiries.

15 Brantwood Street, Sans Souci

**STONE**