



2/26 Parriwi Road Mosman, NSW

3

2

2

Stunning executive residence with water views

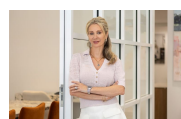
Boasting 341sqm on title, this exceptionally spacious pet-friendly residence has no common walls, is incredibly private and enjoys water views out to the Heads and beyond. Open plan living and entertaining areas seamlessly merge onto a large wrap around terrace. A very spacious gourmet kitchen with new stone benchtops, European appliances and ample cupboard space combine with a lovely breakfast / casual dining area with floor to ceiling glass sliding doors with direct access to the terrace.

Price:

Contact Mark Jones



Mark Jones



Marize Bellomo

0414 972 203



BASEMENT LEVEL

Internal Area Approx 212sqm
External Area Approx 94sqm
Total Area On Title 341sqm

The floor plan is not to scale, measurements are indicative and in metres. All features included in this 3D plan are for inspiration purposes only. This is not an exact replica of the property or the position of exterior elements. Plans should not be relied on. Interested parties should make and rely on their own enquiries.

2/26 Parriwi Road, Mosman





Internal Area Approx 212sqm
 External Area Approx 94sqm
 Total Area On Title 341sqm

The floor plan is not to scale, measurements are indicative and in metres. Exterior elements are not in position. Plans should not be relied on. Interested parties should make and rely on their own enquiries. All other information provided has been collected from reliable sources but cannot be guaranteed for accuracy.



2/26 Parriwi Road, Mosman

