



116 Clontarf Street Seaforth, NSW 5 3 2

Enchanting family home encircled by gardens

Nestled in a tranquil leafy setting on 702sqm, set well back from the kerb and surrounded by expansive gardens, this gorgeous family home offers comfort and convenience in a storybook setting. Almost fairytale-like in appearance, with its secluded setting under towering gums, turret-style gabled roof, soaring octagonal entry foyer and clever loft conversion, this is a home the whole family will love.

- Contemporary kitchen with induction cooktop, stainless steel appliances and statement marble-topped island bench
- Kitchen adjoining spacious living room plus separate dining room, both with french doors onto verandah
- Generous master bedroom opens onto verandah, walk-through robe and oversized shower ensuite
- Two additional upstairs bedrooms with built-ins and french doors to verandah; one master-sized with its own ensuite

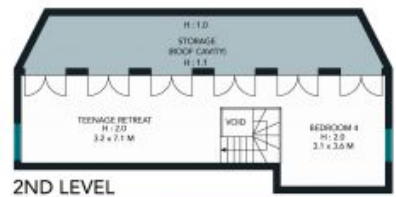
Price: SOLD - Undisclosed



Maria Cassarino
0411 818 093



Lauren Sudol
0438 138 675



The site plan and floor plan are not to scale, measurements are indicative and in metres. Bushes and trees are placed for illustration purposes. Plans should not be relied on. Interested parties should make and rely on their own enquiries. All other information provided has been collected from reliable sources but cannot be guaranteed for accuracy.

116 Clontarf Street, North Balgowlah

STONE



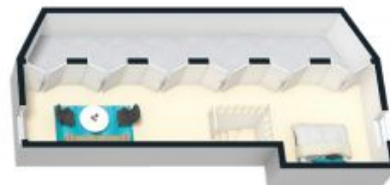
GROUND FLOOR



LOWER LEVEL



1ST FLOOR



2ND LEVEL

The floor plan is not to scale, measurements are indicative and in metres. All features included in this 3D plan are for inspiration purposes only. This is not an exact replica of the property or the position of exterior elements. Plans should not be relied on. Interested parties should make and rely on their own enquiries.



116 Clontarf Street, North Balgowlah

