



1 Glenlee Close Mount Kuring-gai, NSW

4  1  2  2 

Sold by Dean and Di Finch for further details call 0425 214 866

Sold by Dean and Di Finch for further details call 0425 214 866

Privately positioned with tree lined bush views over Apple Tree Bay is this superb home offering a lifestyle of peace and comfort. Beautifully updated throughout to contemporary standards, it boasts a clever two-level design and separate outdoor entertaining areas for the family to enjoy. Wonderfully placed on the doorstep to trains and an easy stroll to Mount Kuring-gai Public school, local shops and Aldi's.

Features :-

- + Brand new polished timber floors, freshly painted interiors and exterior
- + Open plan living and dining, covered entertaining deck with spa & fire pit
- + Kitchen flaunting stone benchtops & Bi-fold window servery for entertaining
- + 4 Bed, master enjoying a walk-in-robe, 2nd master with en-suite & built-ins to all
- + Fresh modern bathroom & laundry, extra living downstairs with own entry

Price: Guide \$1,100,000 - \$1,200,000
Council Rates: \$448.55 p/q
Water Rates: \$179.00 p/q



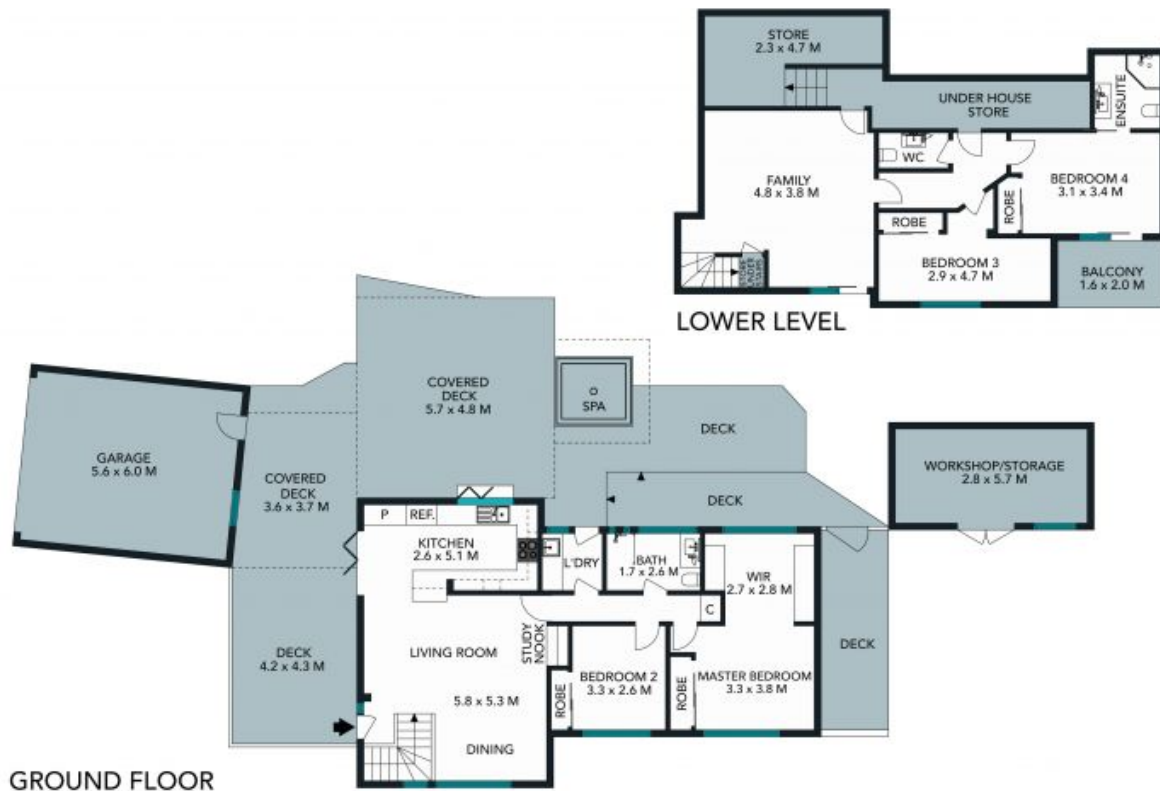
Dean Finch

0425 214 866



Di Finch

0425 226 180



The floor plan is not to scale, measurements are indicative and in meters. Exterior elements are not in position. Plans should not be relied on. Interested parties should make and rely on their own enquiries. All other information provided has been collected from reliable sources but cannot be guaranteed for accuracy.



1 Glenlee Close, Mount Kuring-gai





GROUND FLOOR

LOWER LEVEL

WORKSHOP/STORAGE

The floor plan is not to scale, measurements are indicative and in metres. All features included in this 3D plan are for inspiration purposes only. This is not an exact replica of the property or the position of exterior elements. Plans should not be relied on. Interested parties should make and rely on their own enquiries.



1 Glenlee Close, Mount Kuring-gai

STONE