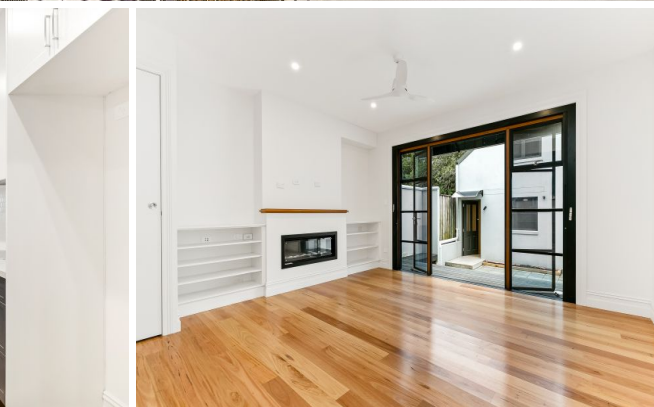


STONE



26 Holdsworth Street Newtown, NSW

4 

3 

1 

Victorian splendour meets modern style

A statement in grace, grandeur and stylish living, this beautifully renovated tri-level terrace boasts high end finishes coupled with natural light throughout. Enjoy peace and convenience just moments walk to various train stations, Hollis Park, local cafes, Carriageworks markets and King Street.

- Expansive separate living areas, floorboards throughout
- Stylish kitchen complete with new appliances
- Three large bedrooms, ceiling fans
- Fourth bedroom / studio at the rear with separate access and bathroom
- Three quality bathrooms
- Landscaped yard ideal for entertaining
- Garage, rear lane access, high ceilings, period features
- Stroll to Enmore and Newtown dining, entertainment, specialty shops, and superior transport options

Price: Deposit taken

Available Date: 15/04/2020



Koxan Oey

0422 004 969



Joseph Tropiano

0401 002 211