

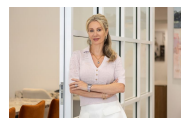
23/40B Barry Street Neutral Bay, NSW

3 2 2

Executive Living in a Private Sanctuary

Complete with easy first-floor access and a private, leafy outlook, this elegant and newly renovated three-bedroom security residence is fully optimised for contemporary living at its finest. Nestled within the tightly held 'Hazelmere' development and only a few moments level stroll to Neutral Bay Public School, village shopping amenities and main bus stop for a quick trip to North Sydney and Sydney CBD.

Price: Contact Marize Bellomo



Marize Bellomo

0414 972 203



Mark Jones



(NOT IN POSITION)
 Internal Area incl. Terrace 104sqm
 Tandem Garage 28sqm
 Total Area 132sqm

The floor plan is not to scale, measurements are indicative and in metres. Colour statements are not in position. Plans should not be relied on. Interested parties should make and rely on their own enquiries. All other information provided has been collected from reliable sources but cannot be guaranteed for accuracy.



23/40B Barry St, Neutral Bay





Internal Area incl. Terrace 104sqm
Tandem Garage 28sqm
Total Area 132sqm

The floor plan is not to scale, measurements are indicative and in metres. All features included in this 3D plan are for inspiration purposes only. This is not an exact replica of the property or the position of exterior elements. Plans should not be relied on. Interested parties should make and rely on their own enquiries.



23/40B Barry St, Neutral Bay

