



306/2a Charles Street Canterbury, NSW

2  2  1 

Pole position apartment offering ultra-modern finishes and spacious interiors

Located within a hop, skip and jump to Woolworth's, Canterbury Station and other specialty stores, living in this immaculately kept apartment block proves to provide the ultimate in comfort and position. Internally you will find updated interiors left behind by a house proud landlord who has made sure that this apartment is separated from its competition

Price: Deposit Taken
Available Date: 04/05/2020



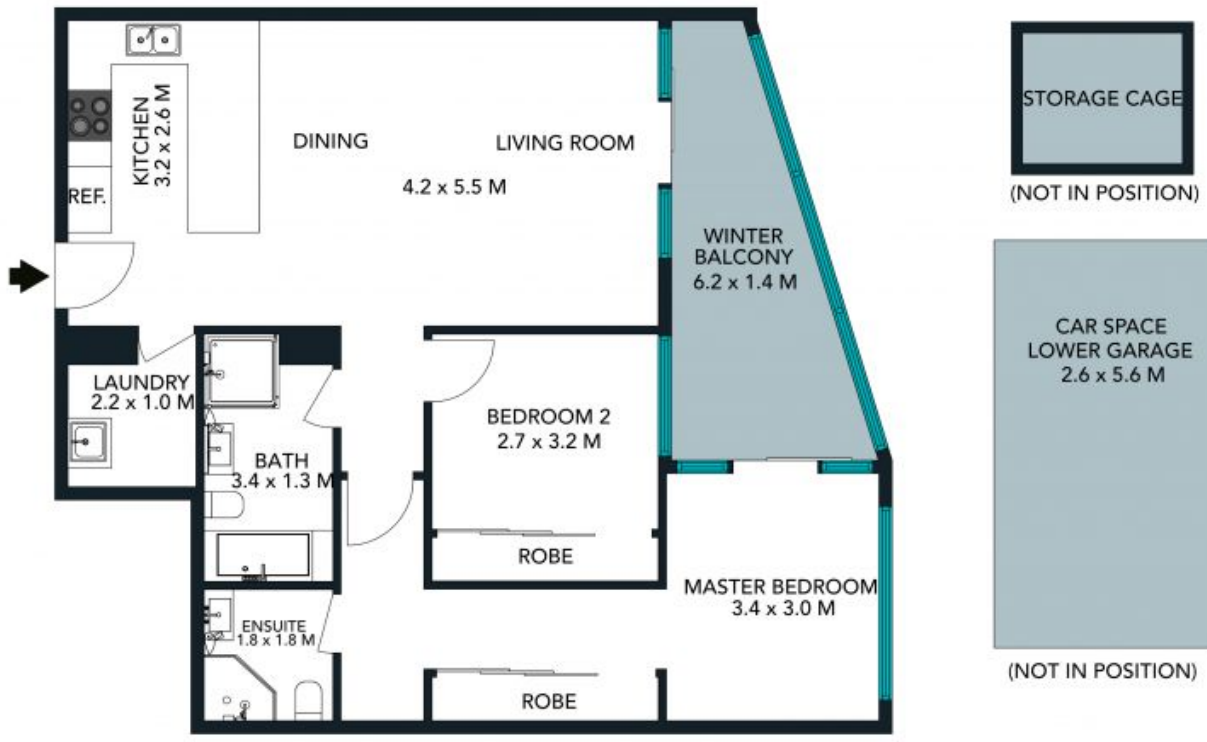
Rick (Riccardo) Pignetti

0439 398 959



Angelica De Luca

0401 870 499



The floor plan is not to scale, measurements are indicative and in metres. Colour elements are not in position. Plans should not be relied on. Interested parties should make and rely on their own enquiries. All other information provided has been collected from reliable sources but cannot be guaranteed for accuracy.

306/2A Charles Street, Canterbury





The floor plan is not to scale, measurements are indicative and in metres. All features included in this 3D plan are for inspiration purposes only. This is not an exact replica of the property or the position of exterior elements. Plans should not be relied on. Interested parties should make and rely on their own enquiries.

306/2A Charles Street, Canterbury

