



91 Radford Street Cliftleigh, NSW

4 2 2

Superb family home

Ultra-modern in design, this single-level residence displays fresh and stylish interiors, that embrace open-plan living areas with style and privacy. The property features;

Price: \$415.00 per week

Available Date: 12/06/2020



Adrienne Palmer

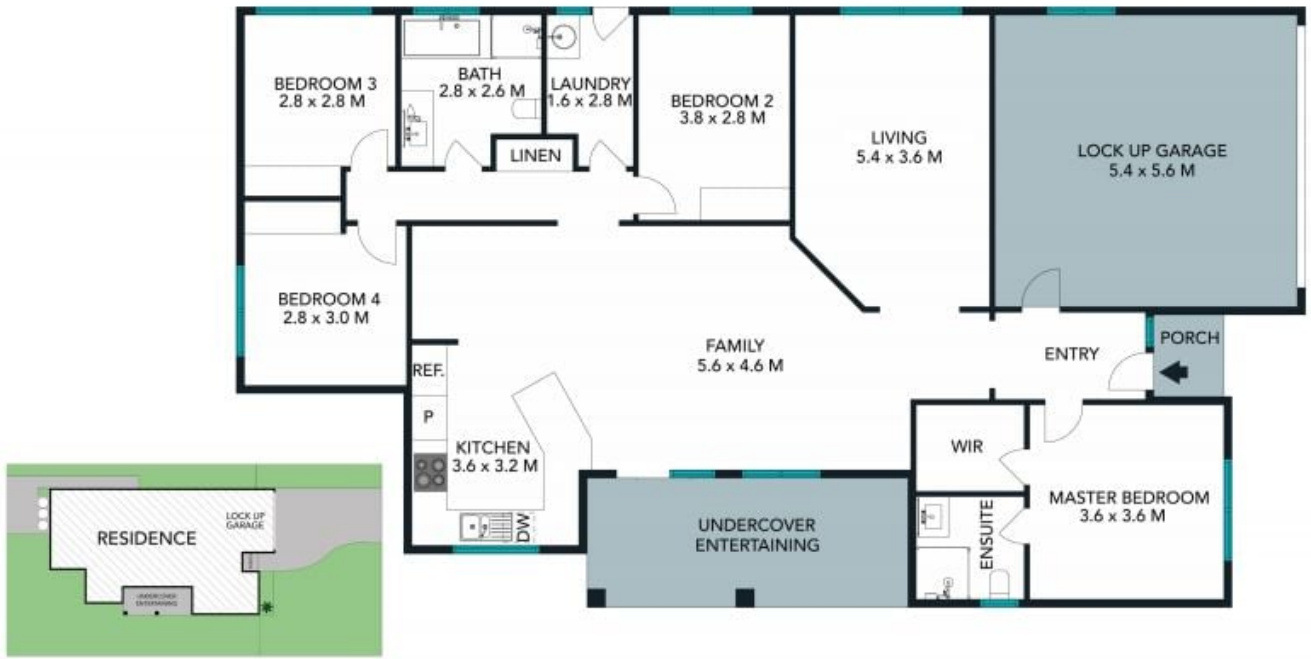
02 4089 1122



The floor plan is not to scale, measurements are indicative and in metres. All features included in this 3D plan are for inspiration purposes only. This is not an exact replica of the property or the position of exterior elements. Plans should not be relied on. Interested parties should make and rely on their own enquiries.

91 Radford Street, Clifton
stonerealestate.com.au

Produced by DIAKRIT



SITE PLAN



The site plan and floor plan are not to scale, measurements are indicative and in metres. Bushes and trees are placed for illustration purposes. Plans should not be relied on. Interested parties should make and rely on their own enquiries.

91 Radford Street, Cliftonleigh
 stonerealestate.com.au

Produced by DIAKRIT