



4/80 Cabramatta Road Mosman, NSW

2 

1 

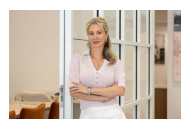
Spacious Art Deco apartment in boutique setting

Brimming with natural light and vintage charm, this inviting semi-style apartment claims a top floor position in a secure Art Deco block of only four private residences. The apartment is wonderfully presented, enjoys elevated leafy outlooks and is enviably placed for a lifestyle of relaxed living and quiet convenience just a short stroll from the delights of Cremorne village.

- Classic details and decorative ceilings provide a timeless character finish
- Bright spacious living room, additional sitting area and modern kitchen/dining
- Skylit kitchen has gas cooking and quality appliances including a dishwasher
- Two double bedrooms featuring built-in robes plus air conditioning to master
- North facing sunroom adjoining master could be used as home office/nursery
- Elegantly updated bathroom including a bath and separate internal laundry
- Rear deck with leafy elevation providing tree-filtered view towards the city
- Sensational shared rear garden with direct stair access from the apartment

Price:

Contact Marize Bellomo



Marize Bellomo

0414 972 203



Internal Area Approx 107 sqm
 External Area Approx 8 sqm
 Total Area Approx 115 sqm



The floor plan is not to scale, measurements are indicative and in metres. Colour elements are not to position. Plans should not be relied on, interested parties should make and rely on their own enquiries. All other information provided has been collected from reliable sources but cannot be guaranteed for accuracy.

4/80 Cabramatta Road, Mosman





Internal Area Approx 107 sqm
External Area Approx 8 sqm
Total Area Approx 115 sqm

The floor plan is not to scale, measurements are indicative and in metres. All features included in this 3D plan are for inspiration purposes only. This is not an exact replica of the property or the position of exterior elements. Plans should not be relied on. Interested parties should make and rely on their own enquiries.



4/80 Cabramatta Road, Mosman

