



6/42A Kent Street Epping, NSW

2

1

1

Spacious and a stroll from Epping station

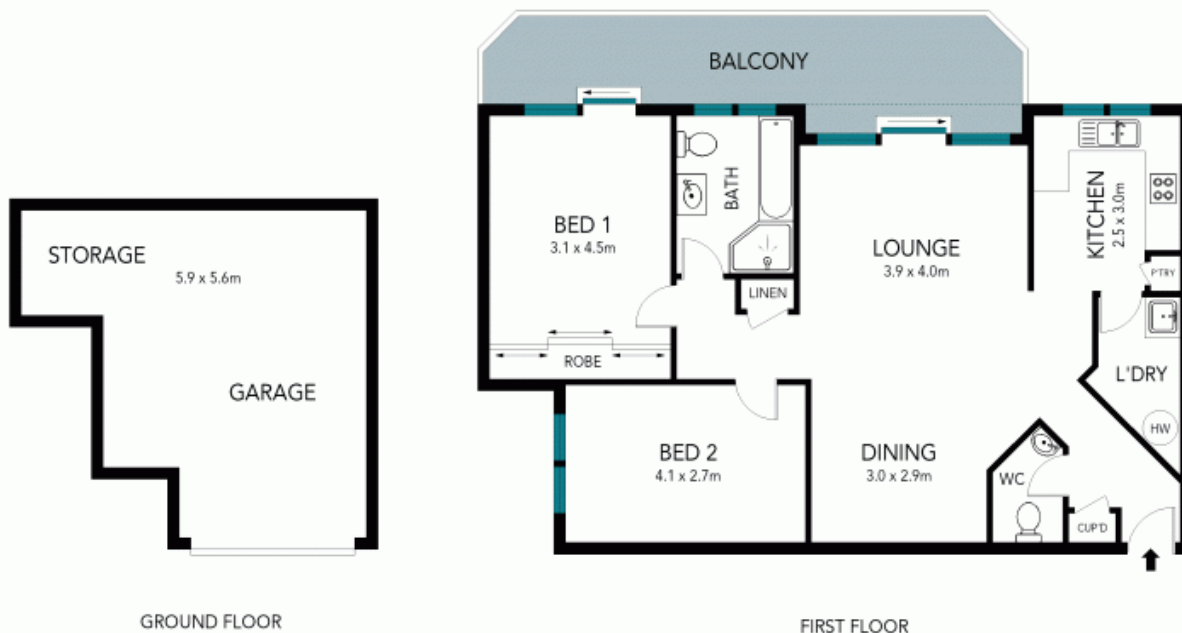
Set amidst lush surrounds in the popular park side 'Boronia Gardens' complex, this well-maintained unit boasts a private top floor position only one level up from the building entrance in a secure block of just ten. The home is bright and airy throughout, within convenient walking distance of Epping station, shops and Boronia Park. It is in the catchment for several of the area's most sought-after schools.

Price: Sold \$740,000
Council Rates: \$293.00 p/q
Water Rates: \$184.00 p/q
Strata Rates: \$807.00 p/q



Vincent Goh

0412 316 797



The floor plan is not to scale; measurements are indicative and in metres. Exterior elements are not in position. Plans should not be relied on. Interested parties should make and rely on their own enquiries.

6/42A Kent Street, Epping

