

24/209 Waterloo Road Marsfield, NSW



Easy living convenience

Ideally situated for easy access to the burgeoning Macquarie Park precinct and a walk to everything lifestyle. This renovated unit enjoys an elevated position at the rear of a solid full brick, low-rise boutique complex in a great location. It presents an exceptional opportunity for first home buyers or investors seeking that perfect balance of lifestyle, convenience and potential returns.

Price: Sold \$610,000
Council Rates: \$309.00 p/q
Water Rates: \$177.00 p/q
Strata Rates: \$774.07 p/q



Vincent Goh

0412 316 797

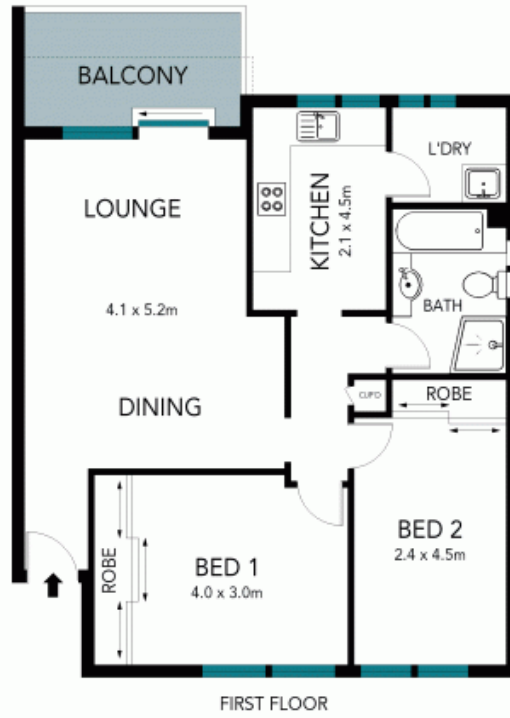


Vincent Goh

0412 316 797



LOWER GROUND FLOOR



FIRST FLOOR

The floor plan is not to scale; measurements are indicative and in metres. Exterior elements are not in position. Plans should not be relied on. Interested parties should make and rely on their own enquiries.

24/209 Waterloo Road, Marsfield

