



306/33-35 Dunning Avenue Rosebery, NSW



A stylish space in the heart of Rosebery

Providing both sleek contemporary style and superb convenience, this ultra-modern apartment makes a chic executive retreat within the architectural '33 Dunning Ave' community. It combines bright airy interiors and a smart single level design to deliver an excellent low-maintenance home in a burgeoning inner urban address. It also enjoys a great position in a peaceful neighbourhood that's within a stroll to a host of local shops and cafes, with easy access to Green Square train station, and just 10 minutes to the CBD.

Price: Contact Agent
Council Rates: \$279.00 p/q
Water Rates: \$200.00 p/q
Strata Rates: \$953.00 p/q



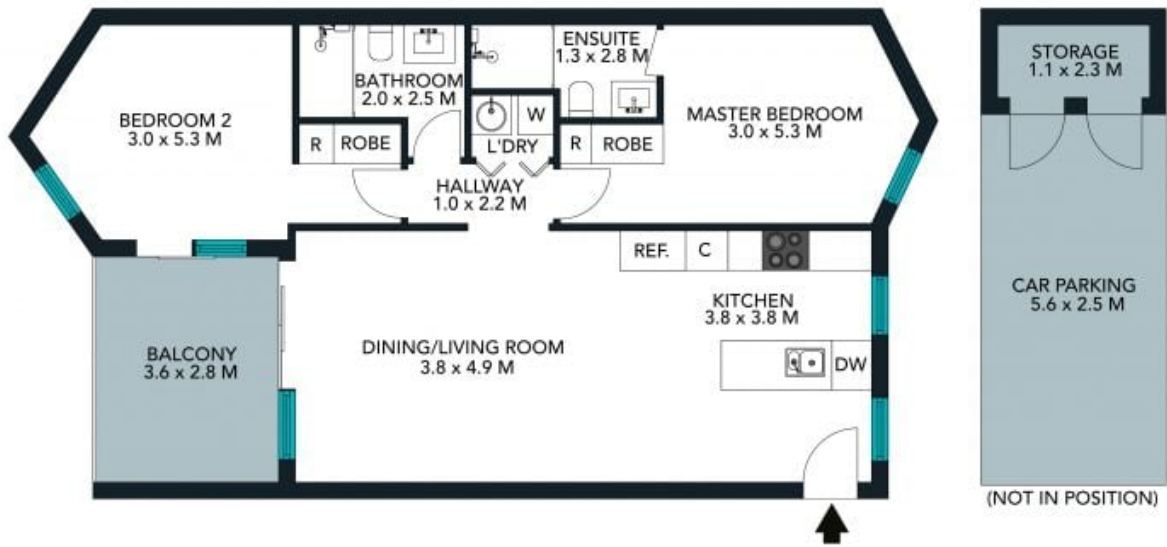
Adrian Vassallo

0406 484 994



Andrew Kanawaty

0450 544 613



The floor plan is not to scale, measurements are indicative and in metres. Colour elements are not to position. Plans should not be relied on. Interested parties should make and rely on their own enquiries. All other information provided has been collected from reliable sources but cannot be guaranteed for accuracy.

306/33-35 Dunning Avenue, Rosebery





The floor plan is not to scale, measurements are indicative and in metres. All features included in this 3D plan are for inspiration purposes only. This is not an exact replica of the property or the position of exterior elements. Plans should not be relied on. Interested parties should make and rely on their own enquiries.

306/33-35 Dunning Avenue, Rosebery

