



3/33-37 Ethel Street Seaforth, NSW

2 2 2

Luxury apartment overlooking Middle Harbour

Providing bright, expansive interiors and a spectacular entertainers' terrace with views over yacht-strewn Middle Harbour and the city skyline, this impeccably-presented contemporary apartment promises luxury living and supreme convenience. A stunning haven, it is ideal for downsizers, empty-nesters, or professionals and offers the ultimate low-maintenance, 'lock up and leave' lifestyle.

Price: \$1,675,000



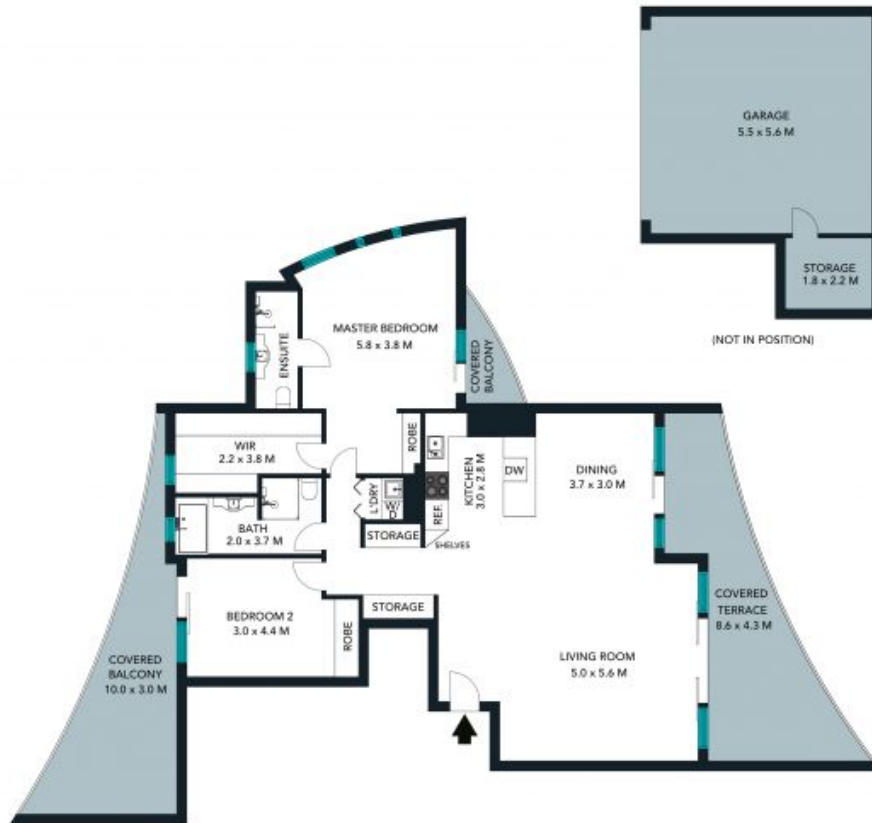
Julian Rowe

0412 544 448



Maria Cassarino

0411 818 093



The floor plan is not to scale, measurements are indicative and in metres. Colour statements are not in position. Plans should not be relied on. Interested parties should make and rely on their own enquiries. All other information provided has been collected from reliable sources but cannot be guaranteed for accuracy.



3/33-37 Ethel Street, Seaforth





The floor plan is not to scale, measurements are indicative and in metres. All features included in this 3D plan are for inspiration purposes only. This is not an exact replica of the property or the position of exterior elements. Plans should not be relied on. Interested parties should make and rely on their own enquiries.



3/33-37 Ethel Street, Seaforth

