

35 Albert Drive Killara, NSW

4 

2 

2 

SOLD BY RYAN WOO AND STEVEN KOURDIS

A spacious family home set on 986sqm approx. in a beautiful, peaceful natural setting. The home is warm and welcoming with a seamless flow and designed with the growing family in mind. The Caesarstone kitchen with stainless steel appliances, large gas and electric Smeg oven and waterfall benchtops is the heart of the home. Located in a picturesque and quiet street, short walk to buses for rail to Lindfield/Chatswood/Macquarie Park and West Lindfield shopping village and minutes from Beaumont Road Primary School

Price:

Contact Agent



Steven Kourdis

0402 555 675



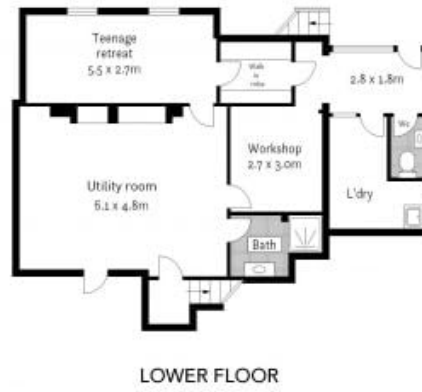
Ryan Woo

0410 884 680

Internal : 244m²



GROUND FLOOR



LOWER FLOOR



SITE PLAN

The floor plan is not to scale, measurements are indicative and in metres. Exterior dimensions are not in position. Plans should not be relied on. Interested parties should make and rely on their own enquiries. All other information provided has been collected from reliable sources but cannot be guaranteed for accuracy.

35 Albert Drive, Killara

