



2/23 View Street Camden, NSW



Walk/stumble home.

Forget the Uber, Taxi (remember them?) or calling for a lift because this property is located only a short walk from Camden's very best restaurants, bars and cafes. Located a few hundred metres from Argyle street the property is perfectly suited to a first home buyer who enjoys a balanced lifestyle of work during the week and entertaining with friends on weekends. The home exudes character with beautiful floor boards, oversized bedrooms and an outdoor courtyard boasting loads of natural light.

Price: \$600,000



Chris Philp

0418686511



Chris Philp

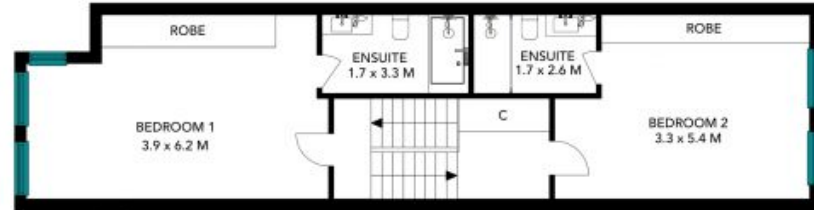
0418686511



GROUND FLOOR/LEVEL 1



(NOT IN POSITION)



LEVEL 2 /LEVEL 3

The floor plan is not to scale, measurements are indicative and in metres. Solar or elements are not in position. Plans should not be relied on, interested parties should make and rely on their own enquiries. All other information provided has been collected from reliable sources but cannot be guaranteed for accuracy.





GROUND FLOOR/LEVEL 1



LEVEL 2 /LEVEL 3

The floor plan is not to scale, measurements are indicative and in metres. All features included in this 3D plan are for inspiration purposes only. This is not an exact replica of the property or the position of exterior elements. Plans should not be relied on. Interested parties should make and rely on their own enquiries.



2/23 View St, Camden

