

302/3 Stromboli Strait Wentworth Point, NSW



Space and style in the Napoli

Convenience, community and sophisticated waterside living combine for an amazing lifestyle with this quality single level apartment. Situated within the sleek architectural Napoli complex, it brings light, space and privacy to its list of many highlights and provides a well-designed living space with a great outlook over the building's landscaped gardens, and a top location that's a short stroll down to the waterfront promenade.

Price: Contact Agent

Council Rates: \$245.00 p/q

Water Rates: \$172.00 p/q



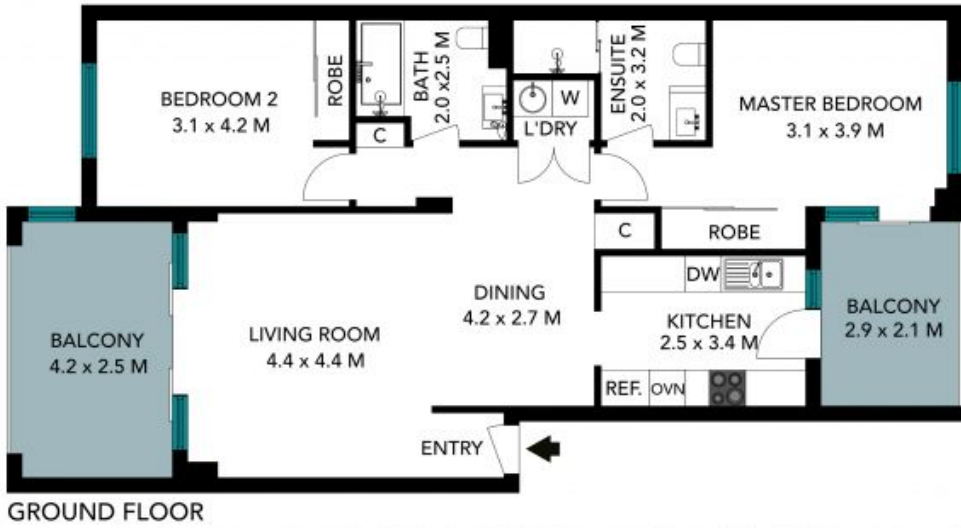
Adrian Vassallo

0406 484 994



Andrew Kanaway

0450 544 613



The floor plan is not to scale, measurements are indicative and in metres. Sizes for elements are not in position. Plans should not be relied on. Interested parties should make and rely on their own enquiries. All other information provided has been collected from reliable sources but cannot be guaranteed for accuracy.



302/3 Stromboli Strait, Wentworth Point





BASEMENT



GROUND FLOOR

The floor plan is not to scale, measurements are indicative and in metres. All features included in this 3D plan are for inspiration purposes only. This is not an exact replica of the property or the position of exterior elements. Plans should not be relied on. Interested parties should make and rely on their own enquiries.



302/3 Stromboli Strait, Wentworth Point

