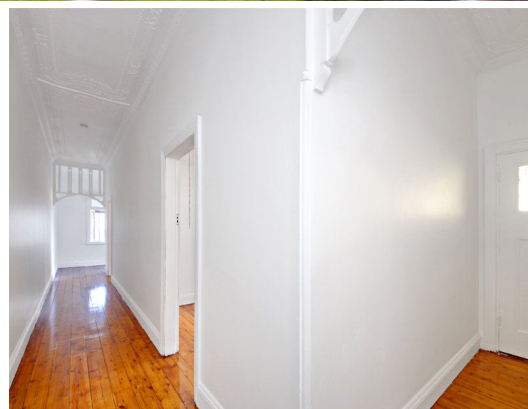


Actual view from rear of property



6 Mount Street ARNCLIFFE, NSW

2

1

1

### Affordable Semi with Stunning Botany Bay Views!

An elevated position with stunning Botany Bay views, charming period features and a sought after location combine to make this the perfect family home. Features include;

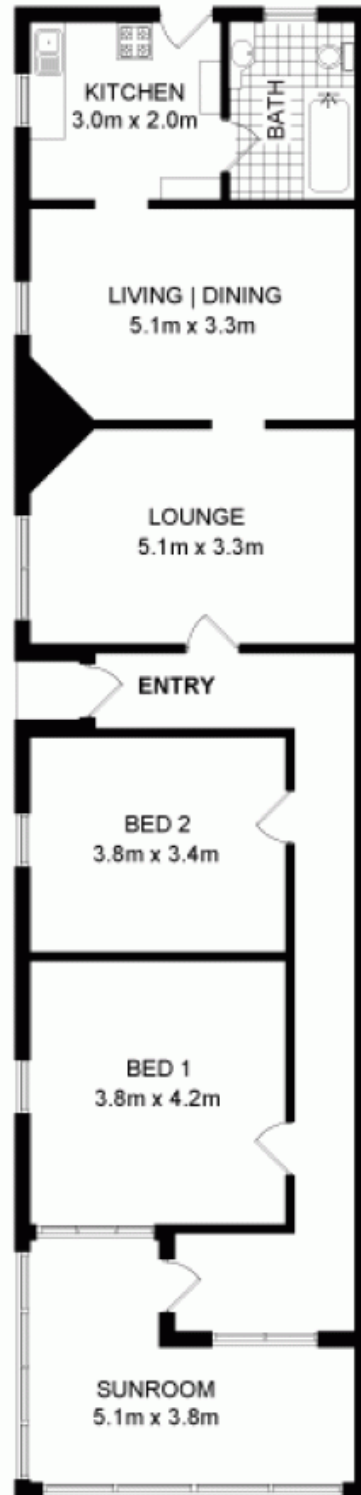
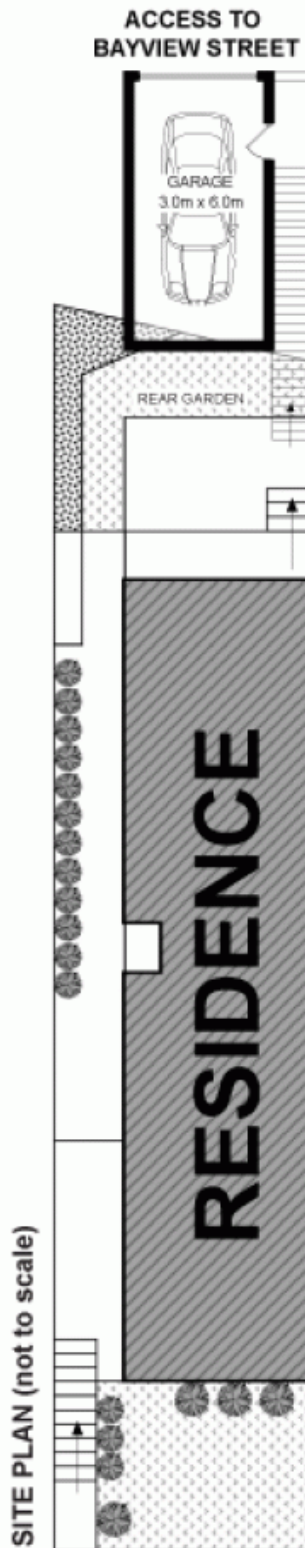
Price:

Offers Above \$ 550,000



**Sam Abbas**

0406 750 075



0 1 2 3 4 **SCALE (metres)**



DISCLAIMER: THIS IS FOR ILLUSTRATIVE PURPOSES ONLY.  
ALL DIMENSIONS ARE APPROXIMATE AND IT DOES NOT  
CONSTITUTE PART OF ANY LEGAL DOCUMENTS.

**ADDRESS:**

**6 MOUNT STREET, ARNCLIFFE**