



15/69 Chapel Street ROCKDALE, NSW

2 1 1

SOLD \$ 470,000 BY GEORGE KAMBOUROGLOU

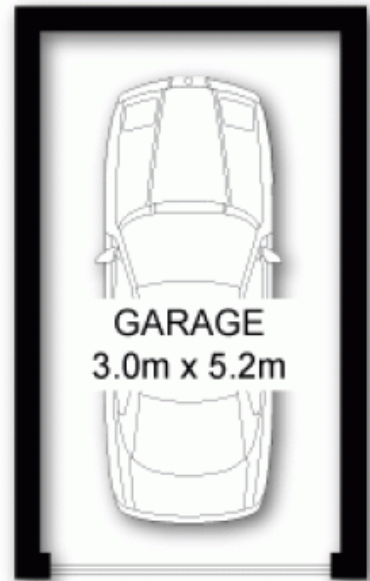
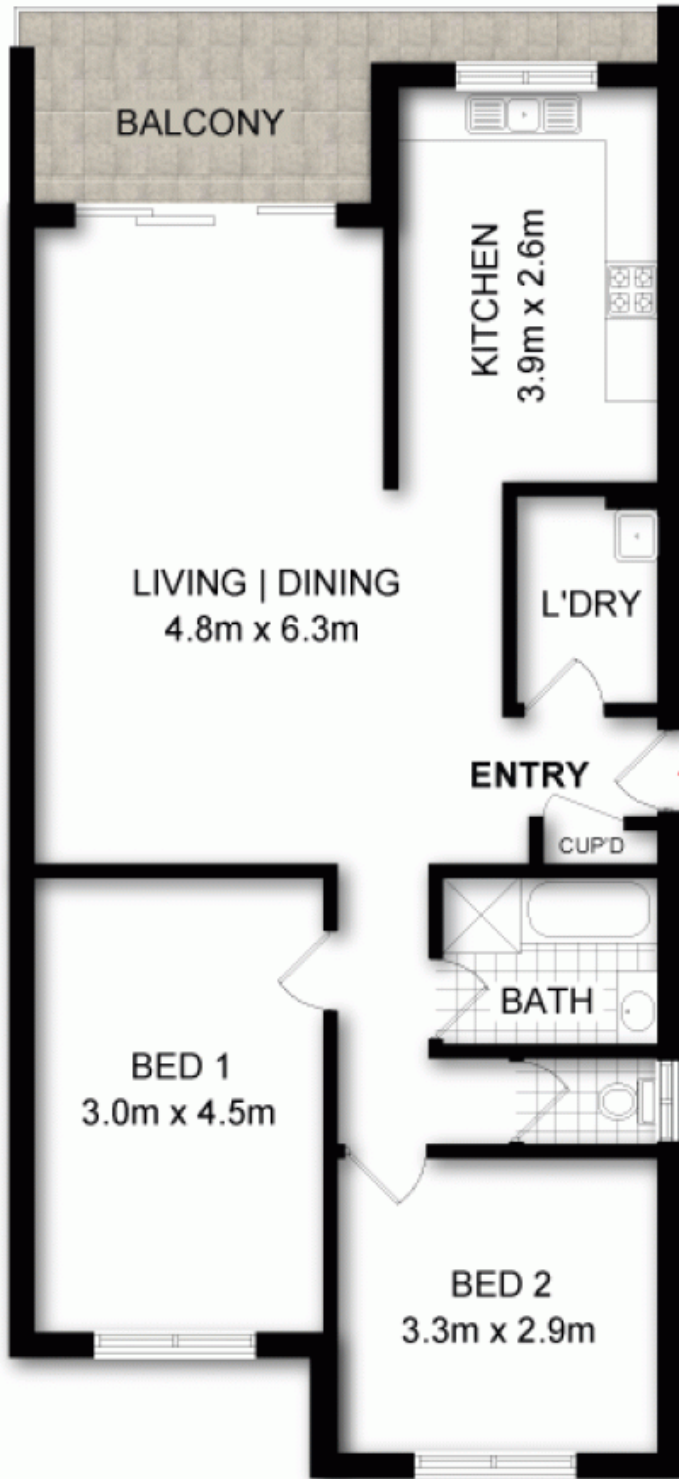
Price: Offers Above \$ 460,000

This fantastic unit provides open plan living with an abundance of natural light. Positioned on the second floor, it is located close to Rockdale station, schools, parks, Rockdale Plaza, Brighton cafes and Brighton beach.



George Kambouroglou

0422 421 111



DISCLAIMER: THIS IS FOR ILLUSTRATIVE PURPOSES ONLY. ALL DIMENSIONS ARE APPROXIMATE AND IT DOES NOT CONSTITUTE PART OF ANY LEGAL DOCUMENTS.

ADDRESS:
15/69 CHAPEL STREET, ROCKDALE