



20/541 Princes Highway ROCKDALE, NSW



SOLD BY SAM ABBAS 0406 750 075

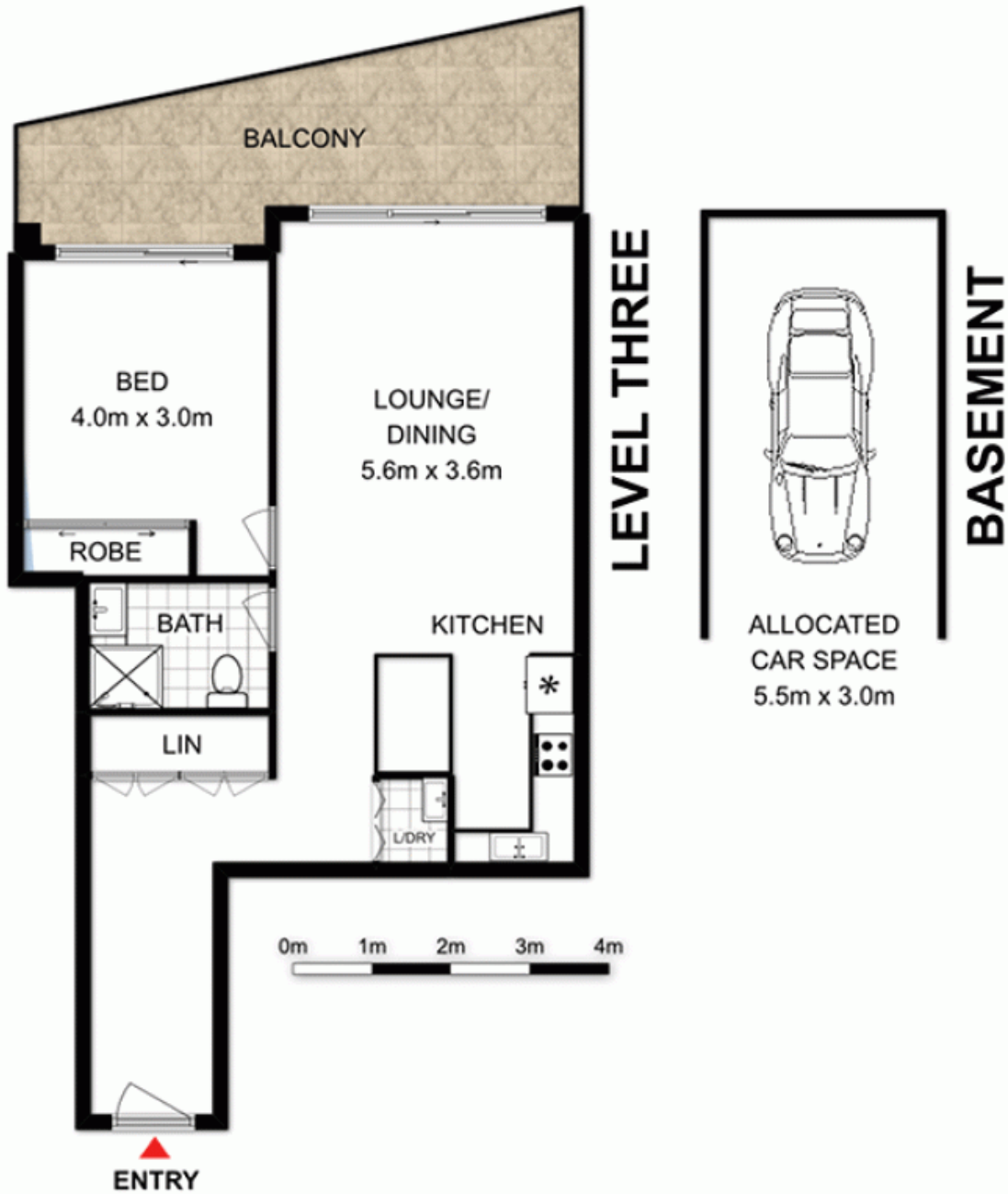
Price: \$500,000

Inspect this stylish sweeping single bedroom apartment, located on level three of this modern architectural block in the heart of popular Rockdale. Inside enjoy open living, dining and kitchen spaces, with bright contemporary finishes, stone bench tops, quality stainless steel appliances, gas cooking and easy sliding doors that open right up to your own private sunlit balcony. With a great use of space, this easy care property of admirable convenience presents the perfect opportunity to enter the property market.



Sam Abbas

0406 750 075



DISCLAIMER: THIS IS FOR ILLUSTRATIVE PURPOSES ONLY.
ALL DIMENSIONS ARE APPROXIMATE AND IT DOES NOT
CONSTITUTE PART OF ANY LEGAL DOCUMENTS.

ADDRESS:
20/541 PRINCES HIGHWAY, ROCKDALE