



1 Alabama Avenue BEXLEY, NSW

4 3 2

### Blue Ribbon Location

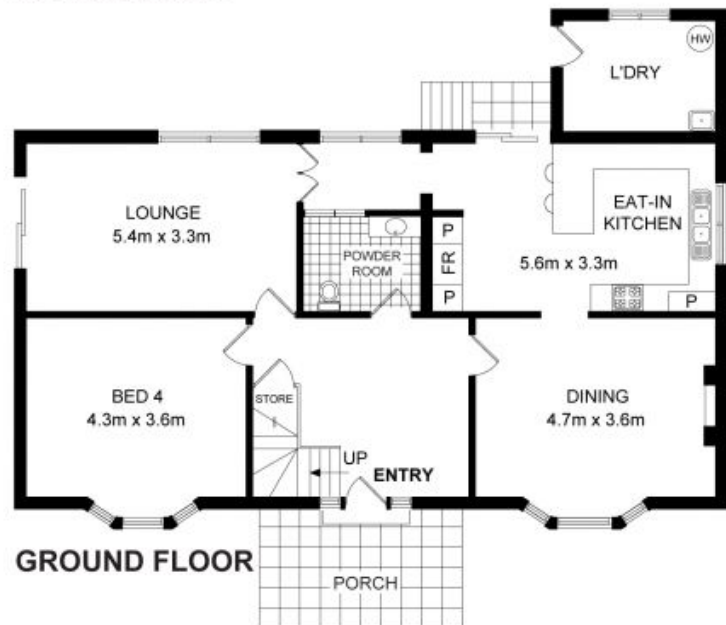
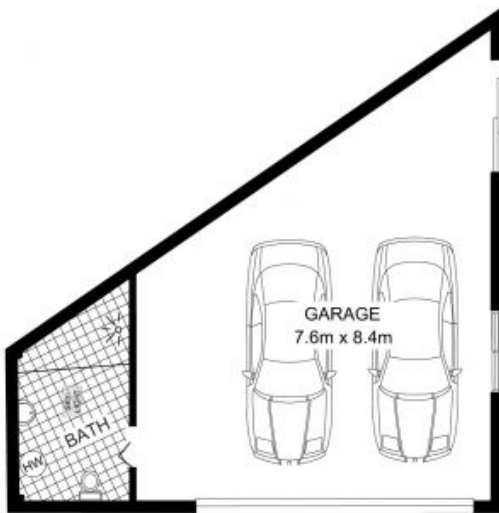
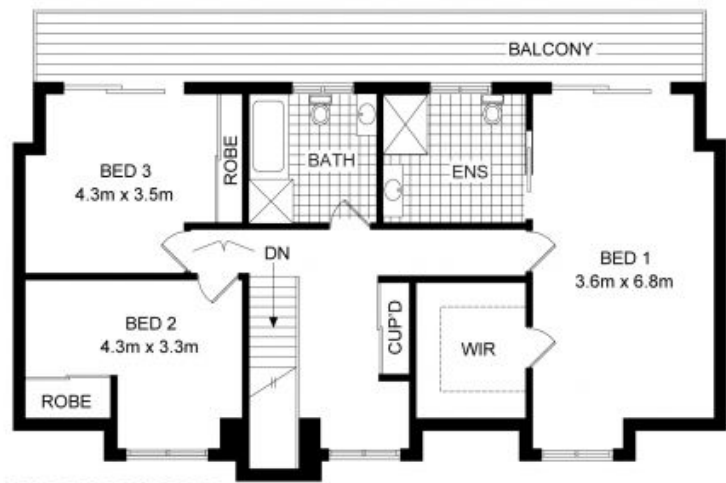
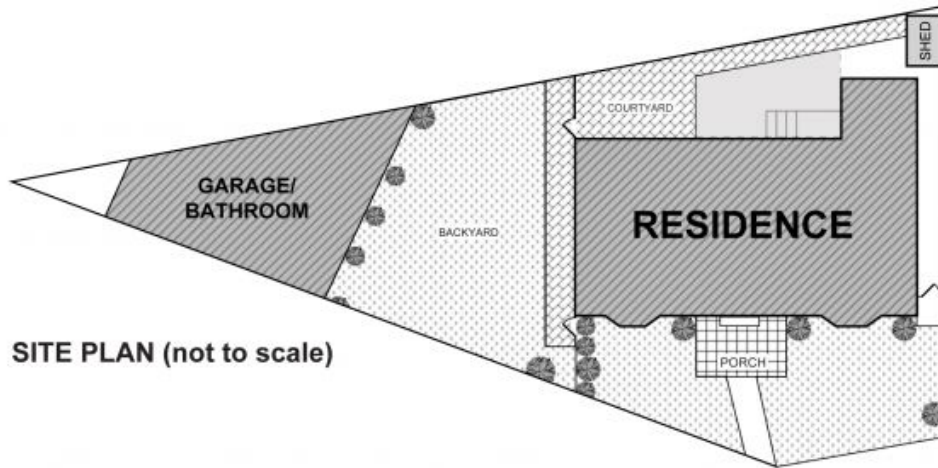
Occupying a peaceful position in a highly regarded enclave that sits on the cusp of sought after Bexley & Hurstville communities, is this delightful two storey family home.

Price: Offers Above \$ 800,000



**George Kambouroglou**

0422 421 111



0 1 2 3 4 **SCALE (metres)**

DISCLAIMER: THIS IS FOR ILLUSTRATIVE PURPOSES ONLY. ALL DIMENSIONS ARE APPROXIMATE AND IT DOES NOT CONSTITUTE PART OF ANY LEGAL DOCUMENTS.

**ADDRESS:**  
**1 ALABAMA AVENUE, BEXLEY**