



9 Roach Street ARNCLIFFE, NSW



LARGE HOUSE, LEVEL BACKYARD 885 SQM

Loved by one family for a very long period this solid home of mammoth proportions is located in Arncliffe.

Sprawling 2 storeys and boasting a practical, flexible floor plan, this family home awaits your love and your imagination.

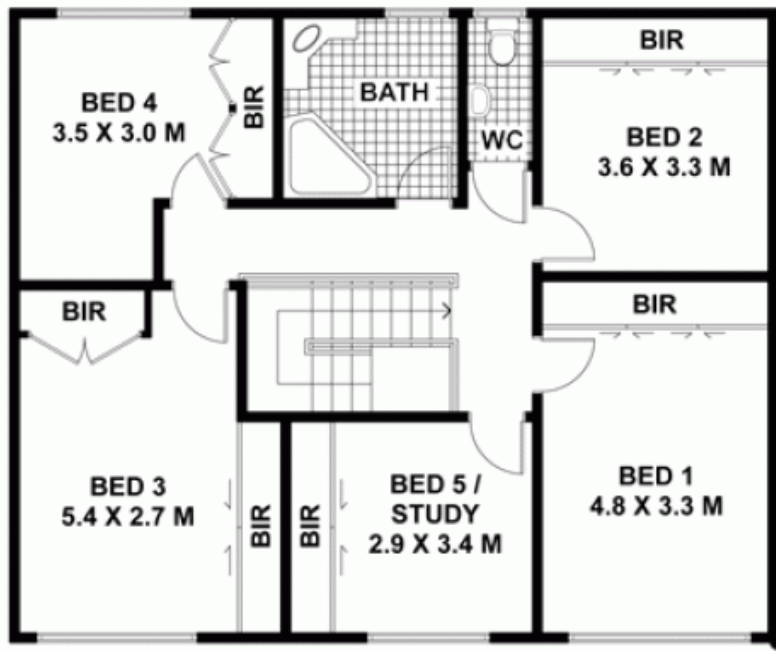
Price:

Offers ABOVE \$ 670,000

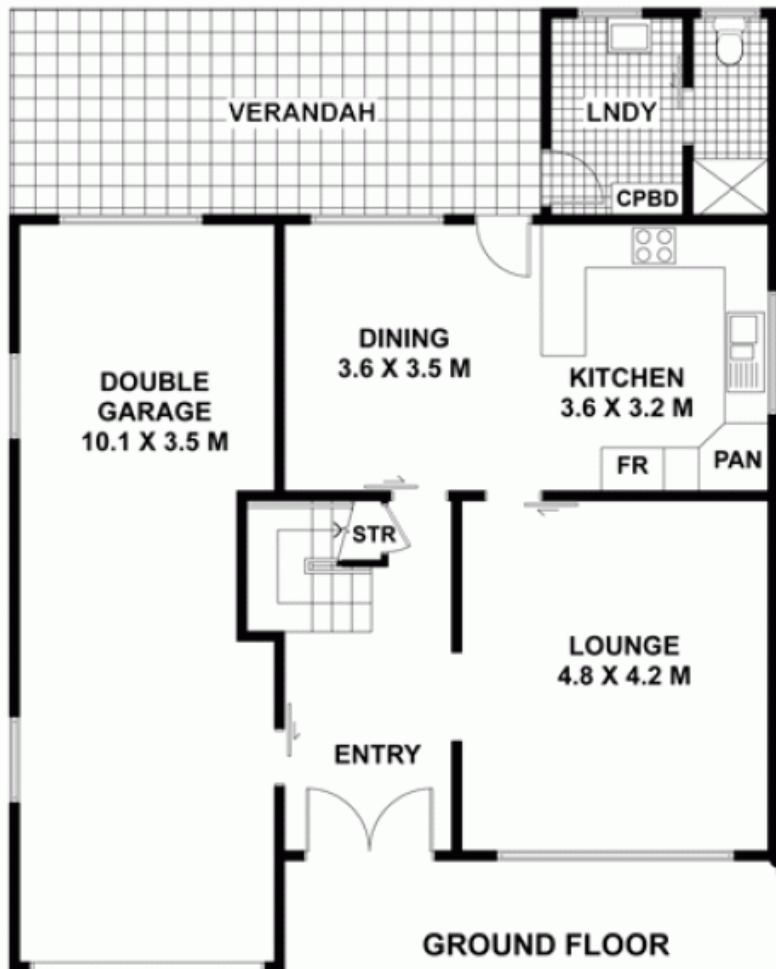


George Kambouroglou

0422 421 111



FIRST FLOOR



GROUND FLOOR



**9 ROACH ST,
 ARNCLIFFE**

DISCLAIMER : All care has been taken in preparing this floor plan, however the accuracy is not guaranteed and no liability will be accepted for any reliance placed upon it.

Produced by PRODUCT PHOTOGRAPHY STUDIO
 mob: 0414 697 215 e: mgphoto@people.net.au