



3/69 Chapel Street ROCKDALE, NSW

2 

1 

1 

### Perfectly Positioned

This elevated ground floor unit provides open plan living with an abundance of natural light. Positioned on the ground floor but elevated, it is located close to Rockdale station, schools, parks, Rockdale Plaza, Brighton cafes and beach.

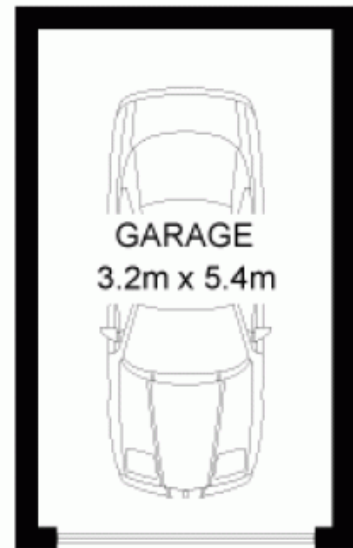
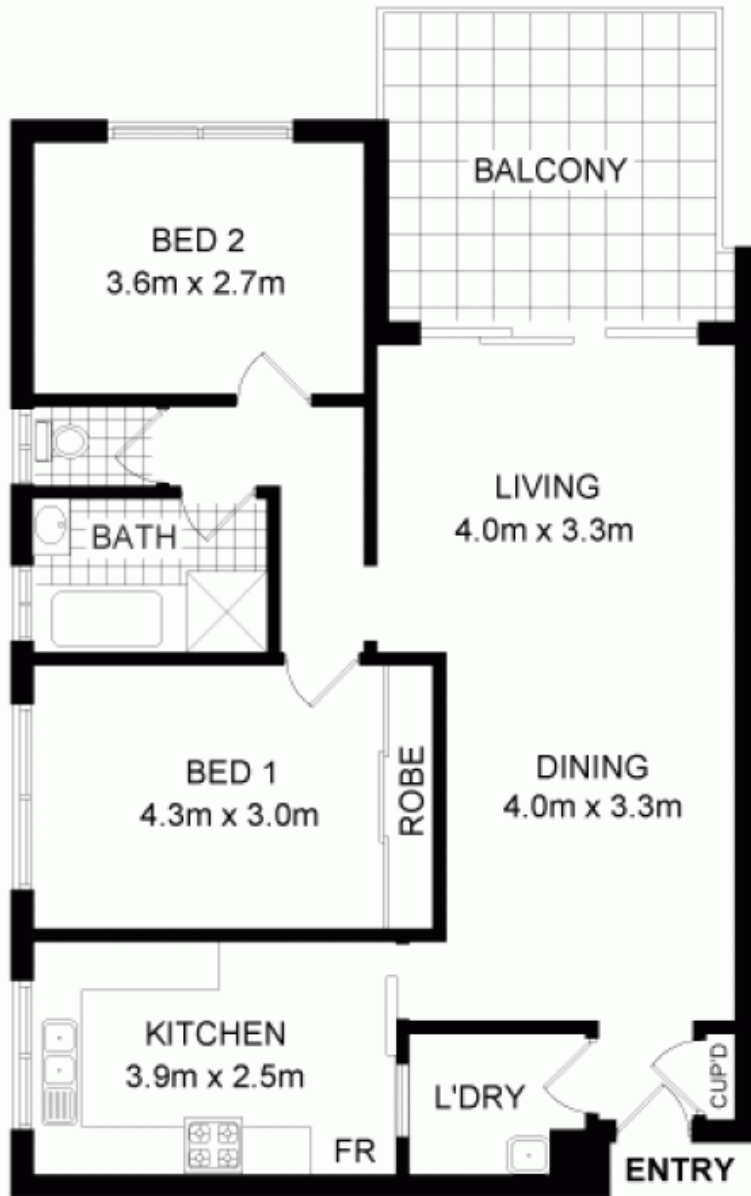
Price:

Offers Above \$ 400,000



**George Kambouroglou**

0422 421 111



0 1 2 3 4 **SCALE (metres)**

DISCLAIMER: THIS IS FOR ILLUSTRATIVE PURPOSES ONLY.  
ALL DIMENSIONS ARE APPROXIMATE AND IT DOES NOT  
CONSTITUTE PART OF ANY LEGAL DOCUMENTS.

**ADDRESS:**  
**3/69 CHAPEL STREET, ROCKDALE**

FLOORPLAN BY [www.sosphotography.com.au](http://www.sosphotography.com.au)