

14 Atkinson Lane Arncliffe, NSW



SOLD BY SAM ABBAS 0406 750 075

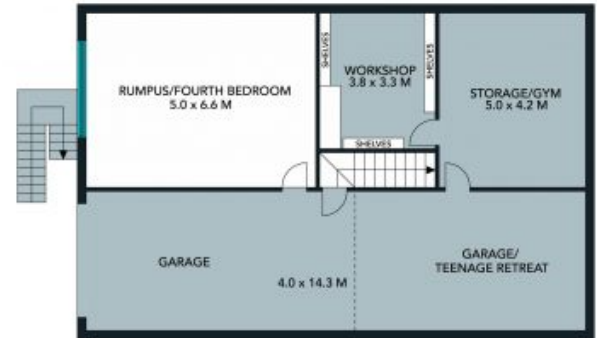
Price: \$1,320,000

Families will delight in this quality brick home in a cul-de-sac, poised above Gardiner Park. Come together or spread out between the open-plan living area, vast rumpus room, covered deck and sunny lawn. The home is a stroll from Banksia Station and shops, and a short drive from beaches and schools. This emerging hotspot offers incredible value within 15km of the CBD.



Sam Abbas

0406 750 075



The site plan and floor plan are not to scale, measurements are indicative and in metres. Shades and lines are placed for illustration purposes. Plans should not be relied on. Interested parties should make and rely on their own enquiries. All other information provided has been collected from reliable sources but cannot be guaranteed for accuracy.





UPPER GROUND FLOOR

LOWER GROUND FLOOR

The floor plan is not to scale, measurements are indicative and in metres. All features included in this 3D plan are for inspiration purposes only. This is not an exact replica of the property or the position of exterior elements. Plans should not be relied on. Interested parties should make and rely on their own enquiries.

14 Atkinson Lane, Arcliffe

