

STONE

Shared Garden



1/5 Griffin Street Manly, NSW

2 

1 

### Character rich apartment in ideal location

This stunning ground floor apartment set within the boutique art deco building 'Westport' is bursting with rich heritage character and offers a semi-like floorplan in its functionality and appeal. With its light filled interiors enhanced by crisp styling and high sculpted ceilings, its peaceful cul-de-sac setting is within a short stroll of Manly's beaches, wharf and eateries.

Price:

Contact Agent



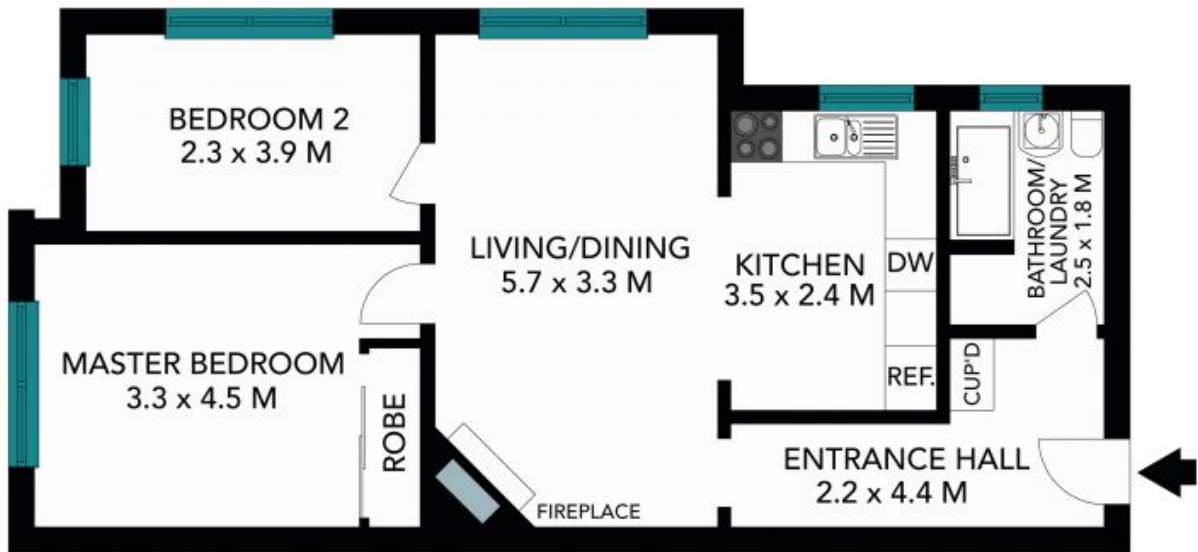
**Eddy Piddington**

0414 333 907



**Michael Egan**

0499 172 009



The floor plan is not to scale, measurements are indicative and in metres. Exterior elements are not to position. Plans should not be relied on. Interested parties should make and rely on their own enquiries. All other information provided has been collected from reliable sources but cannot be guaranteed for accuracy.



1/5 Griffin Street, Manly

**STONE**



The floor plan is not to scale, measurements are indicative and in metres. All features included in this 3D plan are for inspiration purposes only. This is not an exact replica of the property or the position of exterior elements. Plans should not be relied on. Interested parties should make and rely on their own enquiries.

1/5 Griffin Street, Manly



STONE