



22/5 Parriwi Road Mosman, NSW

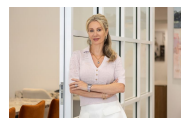
2 

2 

1 

Penthouse perfection with designer interiors

Price: \$2,050,000



**Marize Bellomo**

0414 972 203

SECURE CAR SPACE  
2.7 x 5.5 M

(NOT IN POSITION)

STORAGE  
1.1 x 1.8 M

(NOT IN POSITION)



The floor plan is not to scale, measurements are indicative and in metres. Colour elements are not in position. Plans should not be relied on. Interested parties should make and rely on their own enquiries. All other information provided has been collected from reliable sources but cannot be guaranteed for accuracy.

22/5 Parriwi Road, Mosman





The floor plan is not to scale, measurements are indicative and in metres. All features included in this 3D plan are for inspiration purposes only. This is not an exact replica of the property or the position of exterior elements. Plans should not be relied on. Interested parties should make and rely on their own enquiries.

22/5 Parriwi Road, Mosman

