



14/102 Crimea Road Marsfield, NSW      2      2      2

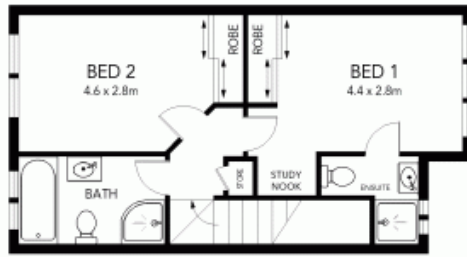
### Tranquil, Spacious, Central

If tranquillity and accessibility are at the top of your list, then this freshly painted stylish townhouse, embraced by the treetops of Lane Cove National Park, will appeal to you. The home, with an impressive sense of space, conveys a welcoming ambience and leisurely lifestyle with superb complex facilities. Nestled away with a pleasantly private courtyard whilst front and centre to excellent transport and popular schools.

**Price:** SOLD  
**Council Rates:** \$310.00 p/q  
**Water Rates:** \$177.00 p/q  
**Strata Rates:** \$762.00 p/q



**Vincent Goh**  
0412 316 797



The floor plan is not to scale; measurements are indicative and in metres. Exterior elements are not in position. Plans should not be relied on. Interested parties should make and rely on their own enquiries.

14/102 Crimea Road, Marsfield



STONE