



5/249-259 Chalmers Street Redfern, NSW



### Courtyard apartment offers a stylish urban haven

Smartly presented throughout, this modern courtyard apartment provides a peaceful retreat with a great sense of style and privacy. It combines designer interiors, quality finishes and spacious outdoor area to deliver a sleek single level home quietly positioned at the rear of the architectural 'Moreton by The Park' complex. This great home also enjoys perfect convenience with cafes and supermarket shopping at the doorstep plus city buses, restaurants and Redfern Park all just a short stroll away.

**Price:** Deposit Taken  
**Bond:** \$2,120  
**Available Date:** 05/09/2020



**Irma Rinaudo**

0426 240 502



**Max Baker**

02 9557 9040

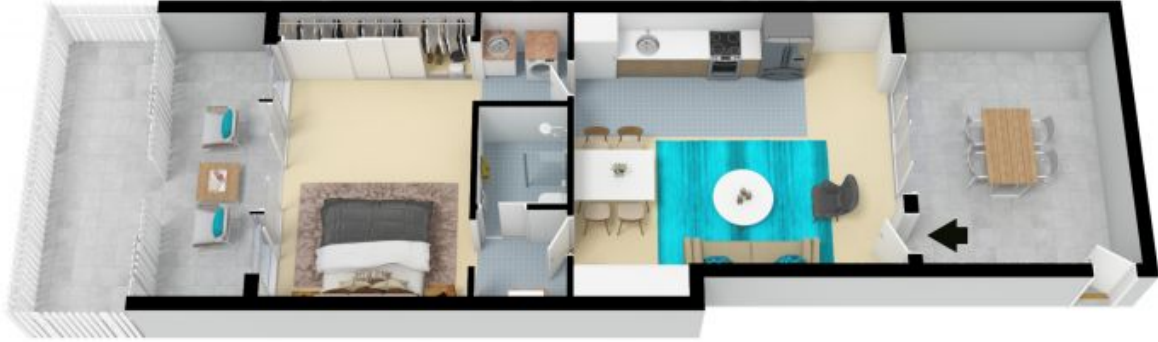


The floor plan is not to scale, measurements are indicative and in metres. Colour elements are not to position. Plans should not be relied on. Interested parties should make and rely on their own enquiries. All other information provided has been collected from reliable sources but cannot be guaranteed for accuracy.



5/249 Chalmers Street, Redfern

STONE



The floor plan is not to scale, measurements are indicative and in metres. All features included in this 3D plan are for inspiration purposes only. This is not an exact replica of the property or the position of exterior elements. Plans should not be relied on. Interested parties should make and rely on their own enquiries.

5/249 Chalmers Street, Redfern



STONE