



30/11 Bidjigal Road Arncliffe, NSW



Contemporary pad a stroll from express trains

Boasting two bedrooms plus a study, this stand-out contemporary apartment is awash with natural light and embellished with quality finishes. Expertly designed, it flows from a sleek modern kitchen and open-plan living area out to a sunny balcony. Nestled at the end of a quiet cul-de-sac, it's an easy stroll to trains, shops, restaurants and riverside parklands.

- Two bedrooms with built-in wardrobes, main with Ensuite
- Separate study room
- Open-plan living extending onto an elevated north-east facing balcony
- Glamorous monochrome kitchen with stone benchtops and dishwasher
- Contemporary floating floorboards throughout
- Elegant bathroom featuring freestanding bath and separate shower
- Internal laundry and ducted air-conditioning
- Walking distance from Wolli Creek and Arncliffe Station and shops

Price: \$703,000



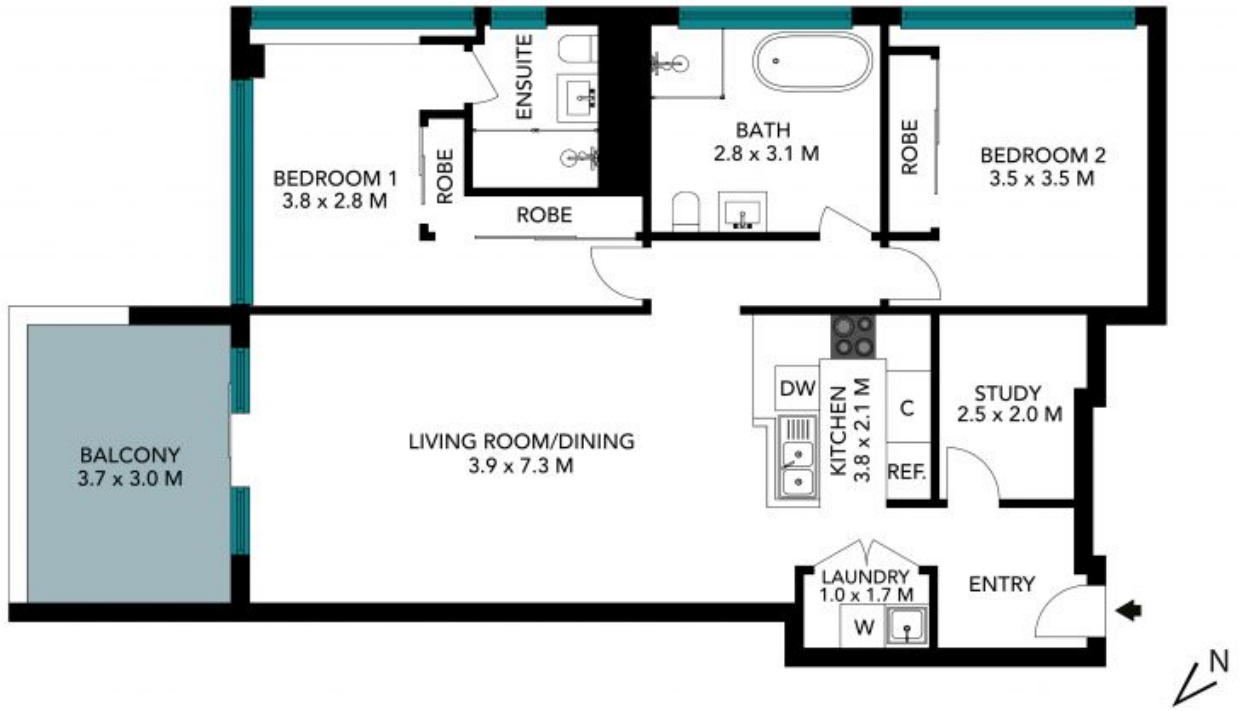
Sam Abbas

0406 750 075



Tyler Taylor

0402 462 405



The floor plan is not to scale, measurements are indicative and in metres. Colour elements are not to position. Plans should not be relied on, interested parties should make and rely on their own enquiries. All other information provided has been collected from reliable sources but cannot be guaranteed for accuracy.

30/15 Bidjigal Road, Arncliffe





The floor plan is not to scale, measurements are indicative and in metres. All features included in this 3D plan are for inspiration purposes only. This is not an exact replica of the property or the position of exterior elements. Plans should not be relied on. Interested parties should make and rely on their own enquiries.

30/15 Bidjigal Road, Arncliffe

