



22/19 Pittwater Road Manly, NSW



### Modern apartment moments to the beach

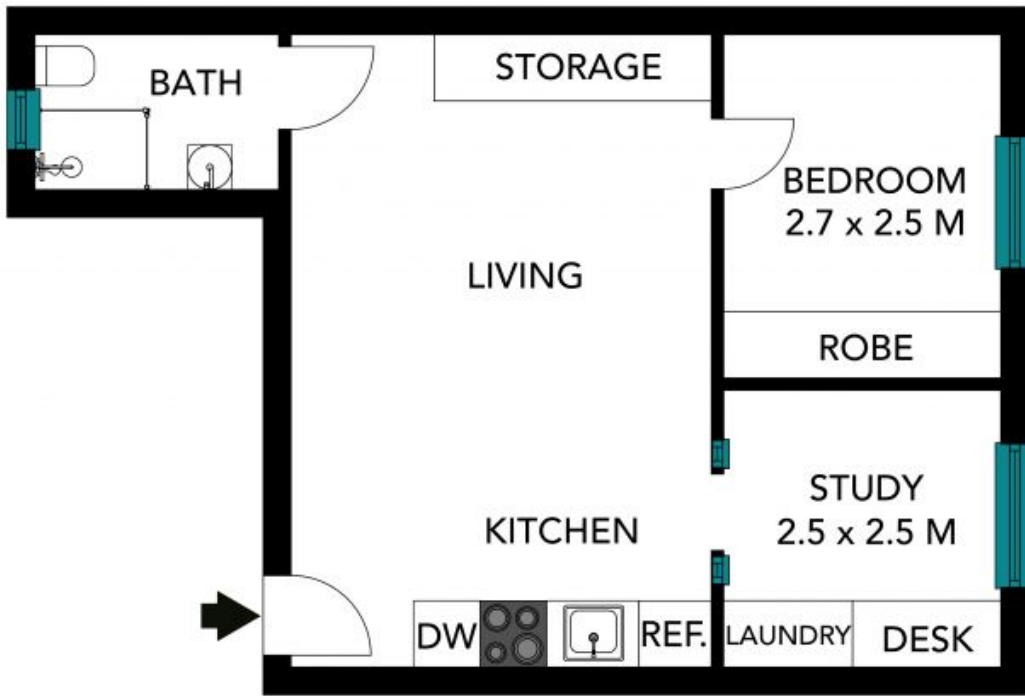
Recently renovated light filled apartment offering an open plan living area plus the added benefit of a separate home office/sunroom. Located just 200 meters from Manly Beach, this 'Beresford House' is a recently updated, charming c1920s security building close to a multitude of shops and transport.

**Price:** Holding deposit taken  
**Bond:** \$2,000  
**Available Date:** 24/10/2020



**Zoe Thackeray**

0449 167 420



The floor plan is not to scale, measurements are indicative and in metres. Colour elements are not to position. Plans should not be relied on. Interested parties should make and rely on their own enquiries. All other information provided has been collected from reliable sources but cannot be guaranteed for accuracy.

22/19 Pittwater Road, Manly





The floor plan is not to scale, measurements are indicative and in metres. All features included in this 3D plan are for inspiration purposes only. This is not an exact replica of the property or the position of exterior elements. Plans should not be relied on. Interested parties should make and rely on their own enquiries.

22/19 Pittwater Road, Manly

