



701/904-914 Pacific Highway Gordon, NSW

3

2

1

Panoramic views & walk rail location

Peacefully positioned at the rear of the block within the Vertice residence, this luxury 3 bedroom apartment is an outstanding lifestyle opportunity which enjoys breathtaking panoramic views of city skyline and blue mountains. Featuring modern and light filled interiors, it offers a spacious open plan design and effortless indoor/outdoor flow to an expansive entertainers balcony.

Price: Contact Agent
Council Rates: \$340.44 p/q
Water Rates: \$177.57 p/q
Strata Rates: \$1,043.70 p/q



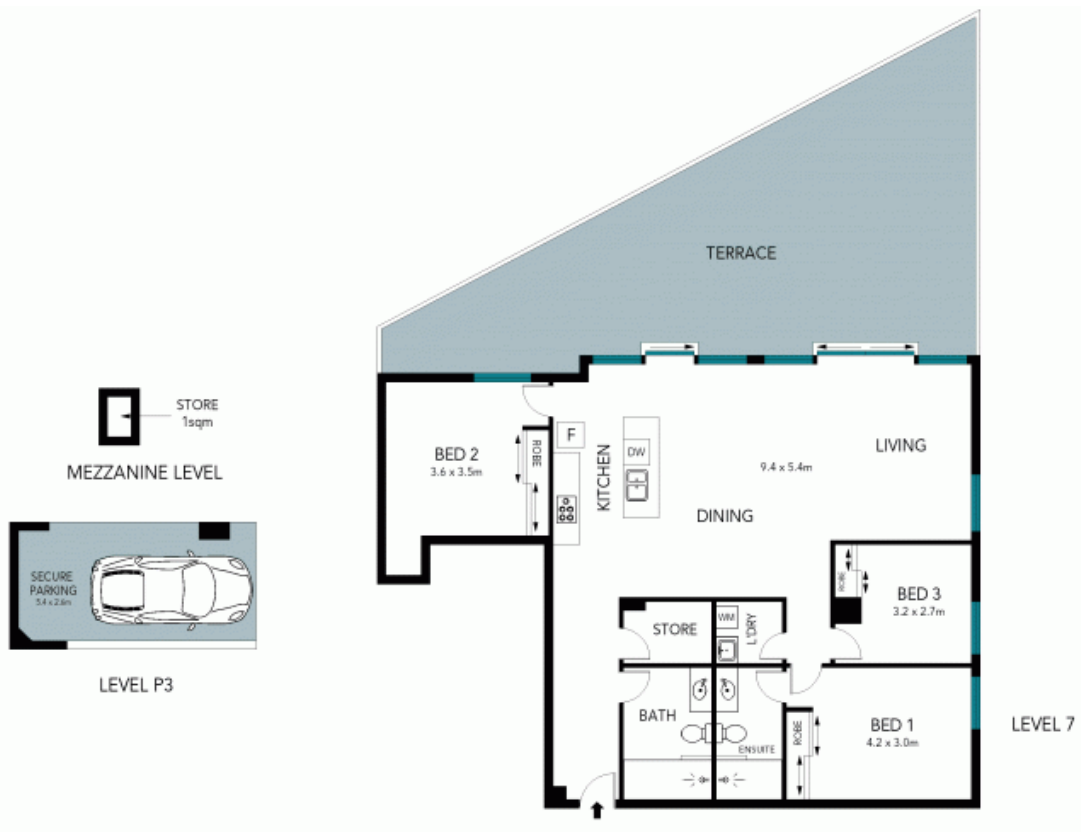
Andrew Braid

0404 979 597



Ryan Woo

0410 884 680



The floor plan is not to scale; measurements are indicative and in metres. Exterior elements are not in position. Plans should not be relied on. Interested parties should make and rely on their own enquiries. All other information provided has been collected from reliable sources but cannot be guaranteed for accuracy.

701/904 Pacific Highway, Gordon

