

95 Bay Street Mosman, NSW

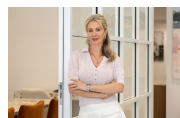


Family home with stunning 180 degree water views

Held for over 30 years, this remarkable family home with an approx 16m frontage offers enormous potential for any discerning buyer looking to further capitalise upon, either immediately or over time (STCA).

Price:

Contact Mark Jones



Marize Bellomo

0414 972 203



Bruce N. Huang

0468 694 060

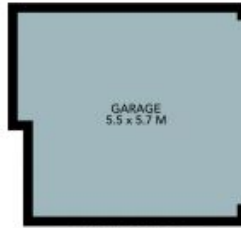
à,fé²•æ-é»,,



GROUND FLOOR



MEZZANINE



(NOT IN POSITION)

Internal Living: 167 sqm approx
 External Living: 67 sqm approx
 Total Living Area: 234 sqm approx

The floor plan is not to scale, measurements are indicative and in metres. Solar/orientation are not to position. Plans should not be relied on, interested parties should make and rely on their own enquiries. All other information provided has been collected from reliable sources but cannot be guaranteed for accuracy.



95 Bay Street, Mosman





GROUND FLOOR

MEZZANINE

Internal Living: 167 sqm approx
 External Living: 67 sqm approx
 Total Living Area: 234 sqm approx

The floor plan is not to scale, measurements are indicative and in metres. All features included in this 3D plan are for inspiration purposes only. This is not an exact replica of the property or the position of exterior elements. Plans should not be relied on. Interested parties should make and rely on their own enquiries.

95 Bay Street, Mosman

