



4/53 East Esplanade Manly, NSW

3 1 1

Beautifully presented in heart of Manly with spectacular views

Amazing wharf-side lifestyle pad with harbour views, directly opposite Manly Wharf, this fabulous apartment reveals sparkling harbour views as well as scenes over the village to the ocean. Blessed with bright and spacious interiors, it is perfectly placed to enjoy Manly's cosmopolitan cuisine scene and world-famous beaches.

Price: HOLDING DEPOSIT TAKEN

Bond: \$4,400

Available Date: 02/11/2020



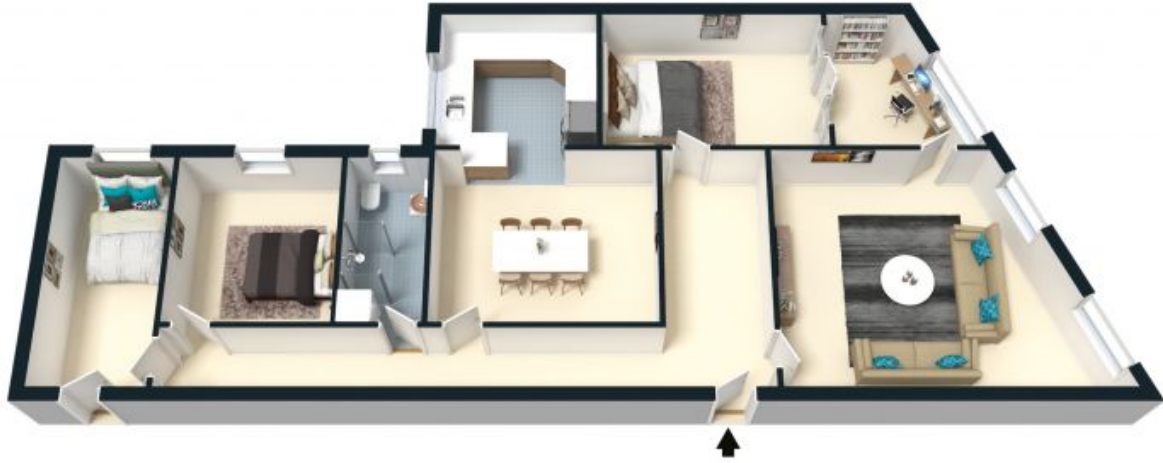
Claudia Sweeney



The floor plan is not to scale, measurements are indicative and in metres. Colour elements are not to position. Plans should not be relied on. Interested parties should make and rely on their own enquiries. All other information provided has been collected from reliable sources but cannot be guaranteed for accuracy.

4/53 East Esplanade, Manly





The floor plan is not to scale, measurements are indicative and in metres. All features included in this 3D plan are for inspiration purposes only. This is not an exact replica of the property or the position of exterior elements. Plans should not be relied on. Interested parties should make and rely on their own enquiries.

4/53 East Esplanade, Manly

