



2 Eastern Street Gwynneville, NSW 3 2 2

Hamptons inspired haven

Flawlessly designed to provide the highest level of contemporary living, this brand new residence impresses with a sought-after north to rear aspect and premium finishes throughout. With a spacious dual level layout, a choice of beautiful living areas, exceptional outdoor flow and a fully landscaped yard, this incredible home offers something for everyone.

Price: \$865,000



Paul Piacentin

0411 754 884

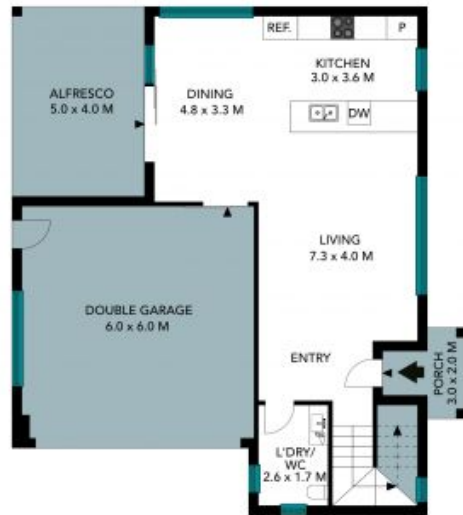


Matthew Kasbarian

0432 521 051



FIRST FLOOR



GROUND FLOOR



SITE PLAN

The site plan and floor plan are not to scale, measurements are indicative and in metres. Bushes and trees are placed for illustration purposes. Plans should not be relied on. Interested parties should make and rely on their own enquiries. All other information provided has been collected from reliable sources but cannot be guaranteed for accuracy.



2 Eastern Street, Gwynneville





FIRST FLOOR



GROUND FLOOR



The floor plan is not to scale, measurements are indicative and in metres. All features included in this 3D plan are for inspiration purposes only. This is not an exact replica of the property or the position of exterior elements. Plans should not be relied on. Interested parties should make and rely on their own enquiries.

2 Eastern Street, Gwynneville

