



95/8-12 Willock Avenue MIRANDA, NSW



Pristine Locale

Promising an ultra-convenient low maintenance lifestyle, this apartment offering privacy, a leafy outlook and featuring lift access, is located in the highly sought "Wilshire" complex. Boasting an oversized living and dining area, two bathrooms, tandem lock-up garage and resort-like facilities including security intercom, swimming pool, spa and gymnasium providing a perfect opportunity for downsizers or the growing family

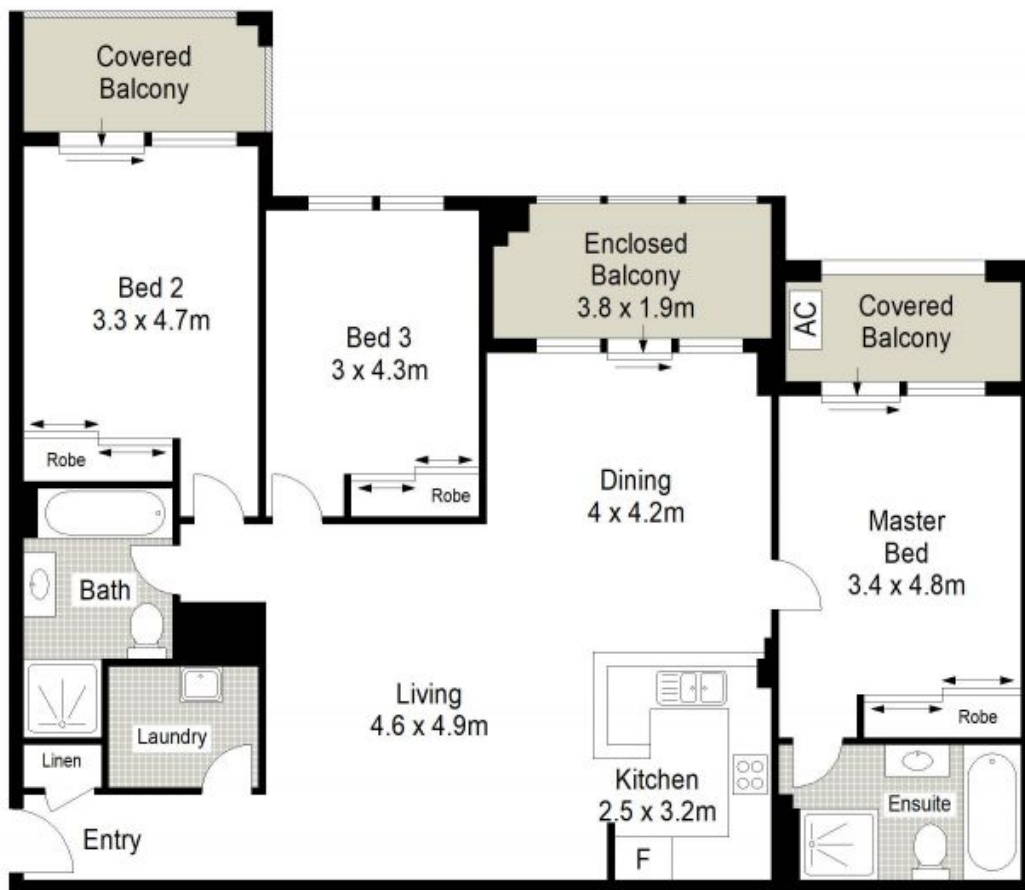
Price:

Contact Agent

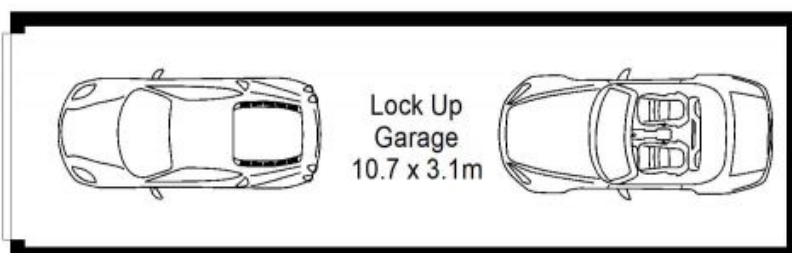


Rhys Christofa

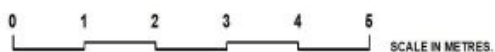
0415 684 877



LEVEL SIX



BASEMENT



Scale in metres. Indicative only. Dimensions are approximate. All information contained herein is gathered from sources we believe to be reliable. However we cannot guarantee its accuracy and interested persons should rely on their own enquiries.

