

136 Kingswood Road ENGADINE, NSW 4 1 1

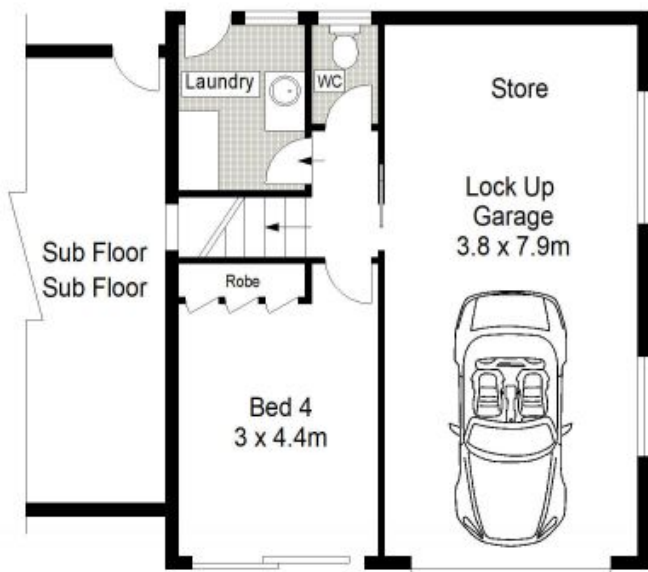
Stylish Family Home

Set amidst beautiful gardens and presenting with a fabulous alfresco deck, this split-level home has been transformed through stunning renovations beautifully highlighted by light-filled interiors throughout. Located in close proximity to Marton Public School, transport and parks, this stylish home is perfect for growing families

Price: Contact Agent



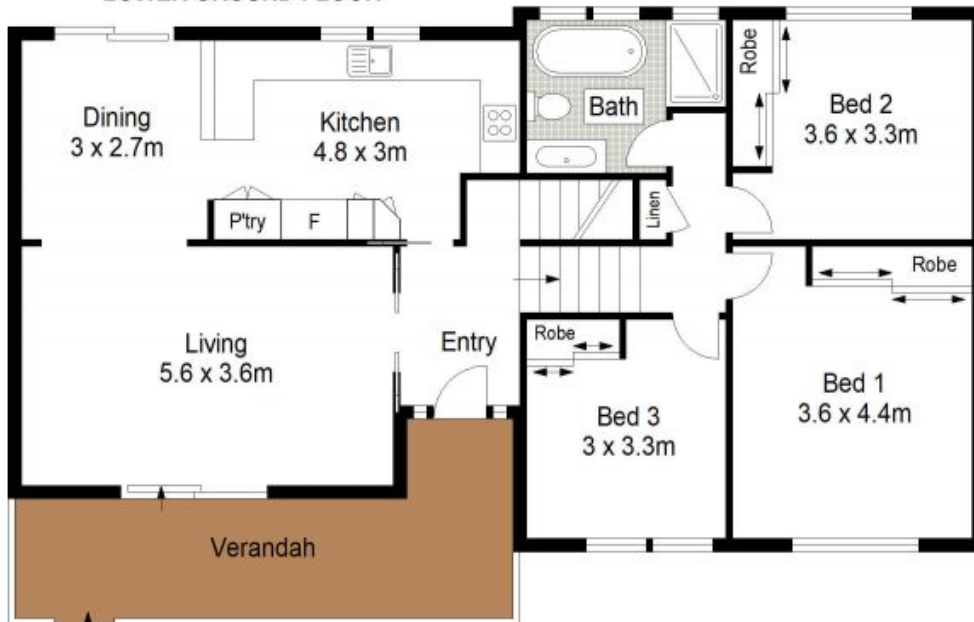
Rhys Christofa
0415 684 877



LOWER GROUND FLOOR



SITE PLAN (NOT TO SCALE)



GROUND FLOOR



Scale in metres. Indicative only. Dimensions are approximate. All information contained herein is gathered from sources we believe to be reliable. However we cannot guarantee its accuracy and interested persons should rely on their own enquiries.