



34 Higginson Avenue ENGADINE, NSW

3 1 2

Hidden Gem

This inviting family home is deceptive from the street and offers a beautiful, private lifestyle. Meticulously renovated throughout, its elevated position captures stunning views of the Heathcote National Park

Price: Guide \$850,000- \$880,000

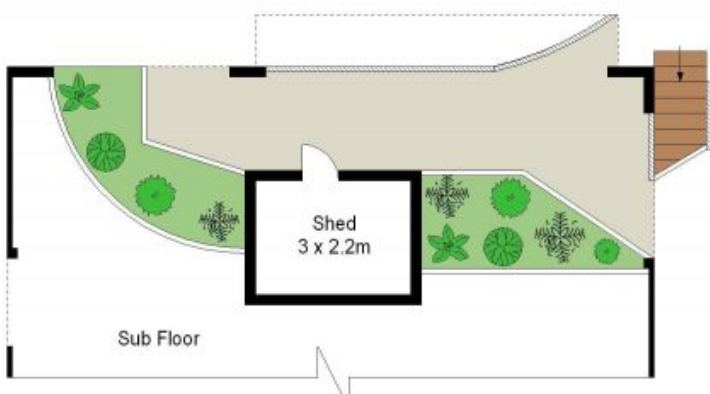


Lora Moore

0418 455 050



GROUND FLOOR



LOWER GROUND FLOOR



SITE PLAN (NOT TO SCALE)



Scale in metres. Indicative only. Dimensions are approximate. All information contained herein is gathered from sources we believe to be reliable. However we cannot guarantee its accuracy and interested persons should rely on their own enquiries.

34 Higginson Avenue, Engadine