

1297 Princes Highway HEATHCOTE, NSW 6 4 5

Huge Family Home with Unlimited Potential

Positioned in an ultra-convenient location, this well-maintained family home presents an outstanding opportunity to renovate, redevelop or build your dream home (STCA). Zoned R2 and situated on an extensive 1,530 sqm block (approx.) this home provides endless potential for growing families, those seeking dual living options, or as astute addition to an investment portfolio.

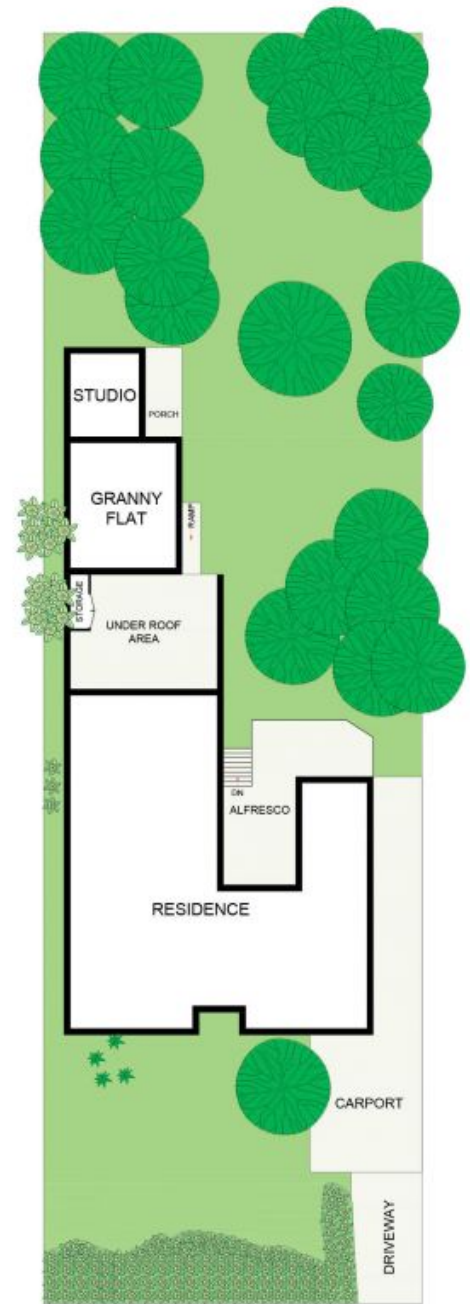
Price: Guide \$1,000,000 to \$1,100,000



Rhys Christofa
0415 684 877



Liam Pesa
0423 601 244



SITE PLAN
(NOT TO SCALE)



1297 Princes Highway, Heathcote

Approximate Gross Internal Area = 300.9 sq m (Including Granny Flat / Studio / Storage)
 Scale in metres. Indicative only. Dimensions are approximate. All information contained herein is gathered from sources we believe to be reliable.
 However, we cannot guarantee its accuracy and interested persons should rely on their own enquiries.