

20 Parklands Avenue HEATHCOTE, NSW

3 

1 

1 

### Endless Opportunities

Situated on a superb, sun drenched block land approx. 600sqm, this well-maintained original home presents an array of opportunities. Positioned in highly sought locale of Heathcote East, with nearby access to the native bushland of the Royal National Park. Home is perfect as is, or perhaps build your dream home.

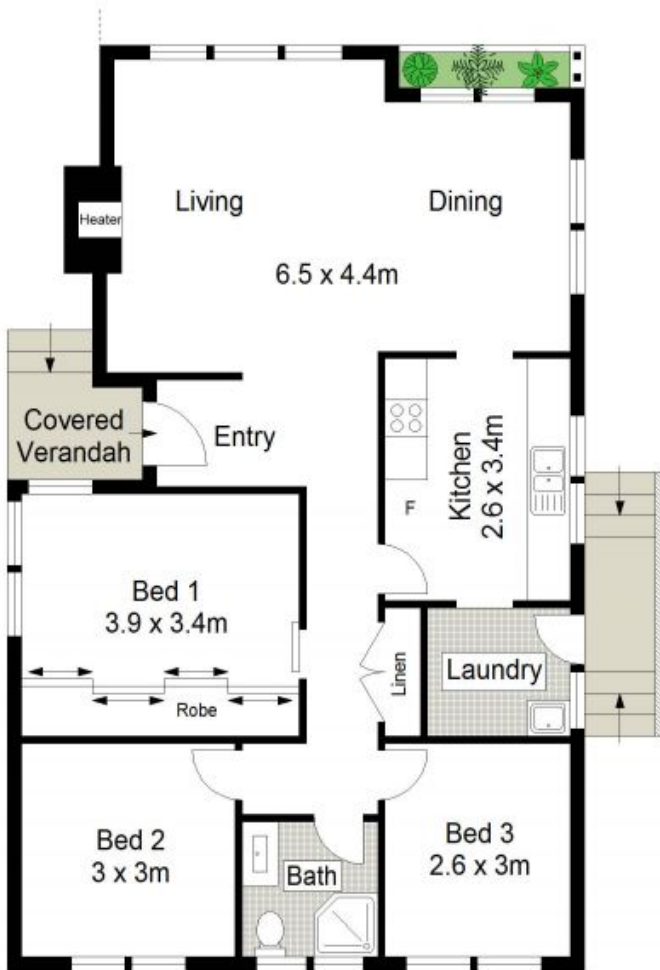
Price:

Guide \$850,000



Lora Moore

0418 455 050



**SITE PLAN (NOT TO SCALE)**



Scale in metres. Indicative only. Dimensions are approximate. All information contained herein is gathered from sources we believe to be reliable. However we cannot guarantee its accuracy and interested persons should rely on their own enquiries.

