

22 Warilda Avenue Engadine, NSW

5

2

1

Spectacular home in tranquil location

Positioned in a tranquil location and surrounded by a serene bush outlook, this modern home provides a calming and relaxed living environment. Boasting abundant space, beautiful interiors and a peaceful location within moments to Marton Public School, sporting fields, caf?'s and transport, this stylish home will appeal to growing families, upsizers or investors seeking an astute addition to their portfolio

Price:

Contact Agent



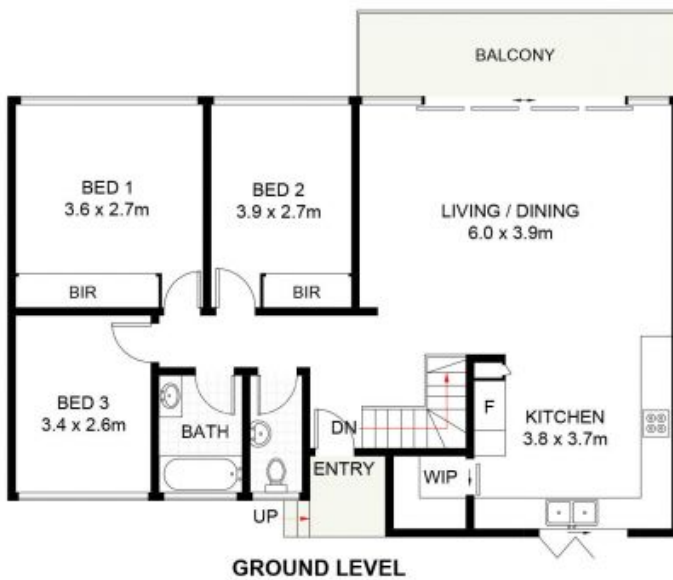
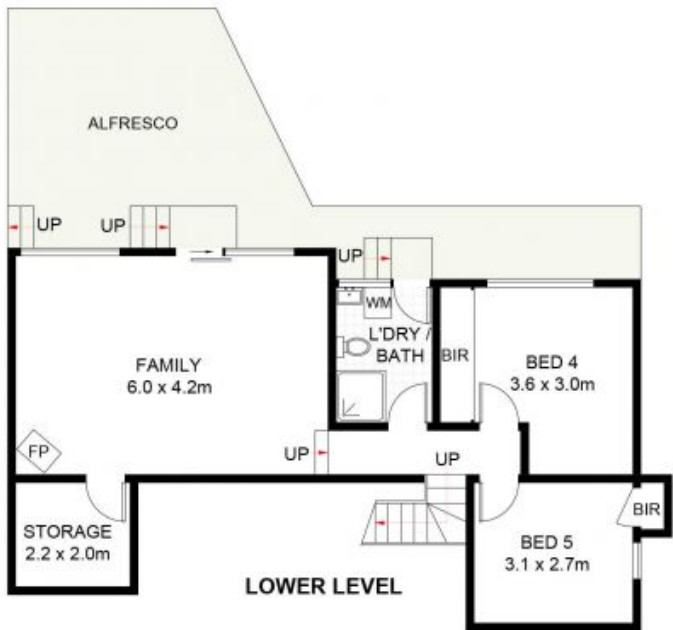
Rhys Christofa

0415 684 877

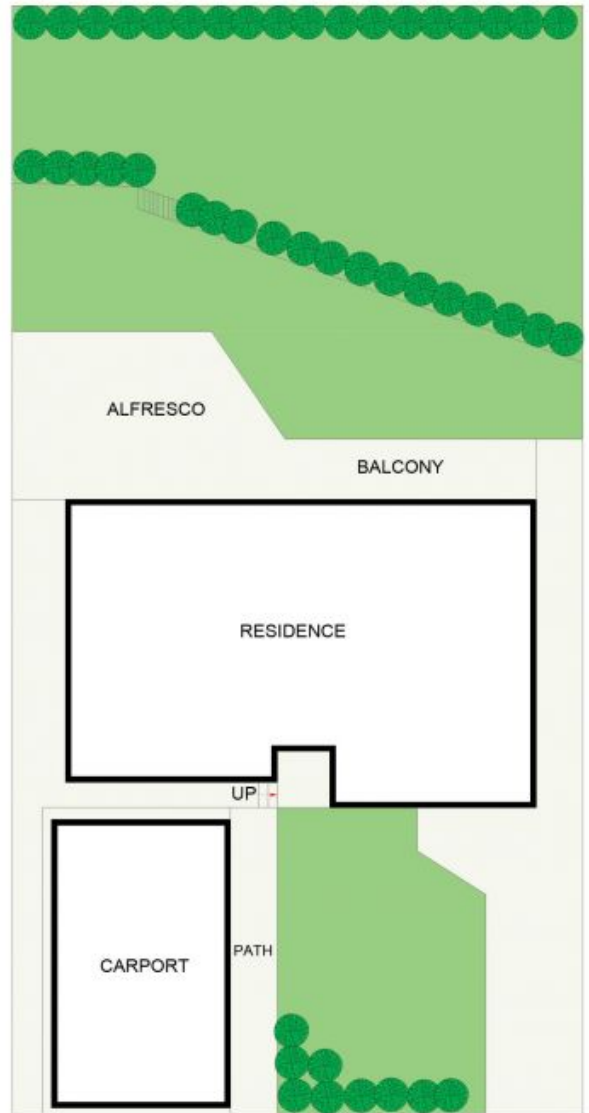


Liam Pesa

0423 601 244



(NOT SHOWN IN ACTUAL LOCATION / ORIENTATION)



SITE PLAN (NOT TO SCALE)



22 Warilda Avenue, Engadine

Scale in metres. Indicative only. Dimensions are approximate. All information contained herein is gathered from sources we believe to be reliable. However, we cannot guarantee its accuracy and interested persons should rely on their own enquiries.