



16 Magarra Place Seaforth, NSW 5 2

Charm, character and panoramic views

Originally built in the early 1900's, and perfectly positioned to take in sweeping views across Middle Harbour and through to the city, this charming federation home is an extremely rare offering. Blending period charm with modern updates and breath-taking views, the home also offers a near level north facing rear lawn and private gardens, making this the ideal family oasis.

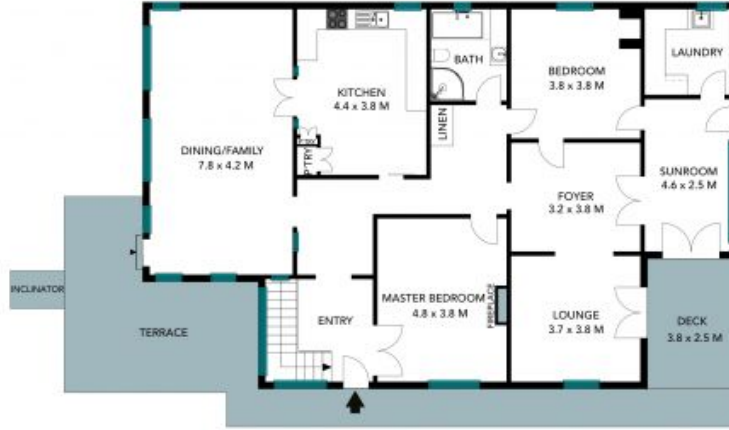
Price: Deposit taken
Available Date: 31/10/2020



Todd Baker
0407 795 090



ENTRY LEVEL



MAIN LEVEL

The floor plan is not to scale, measurements are indicative and in metres. Colour elements are not to position. Plans should not be relied on. Interested parties should make and rely on their own enquiries. All other information provided has been collected from reliable sources but cannot be guaranteed for accuracy.



16 Magarra Place, Seaforth





ENTRY LEVEL



MAIN LEVEL

The floor plan is not to scale, measurements are indicative and in metres. All features included in this 3D plan are for inspiration purposes only. This is not an exact replica of the property or the position of exterior elements. Plans should not be relied on. Interested parties should make and rely on their own enquiries.



16 Magarra Place, Seaforth

